

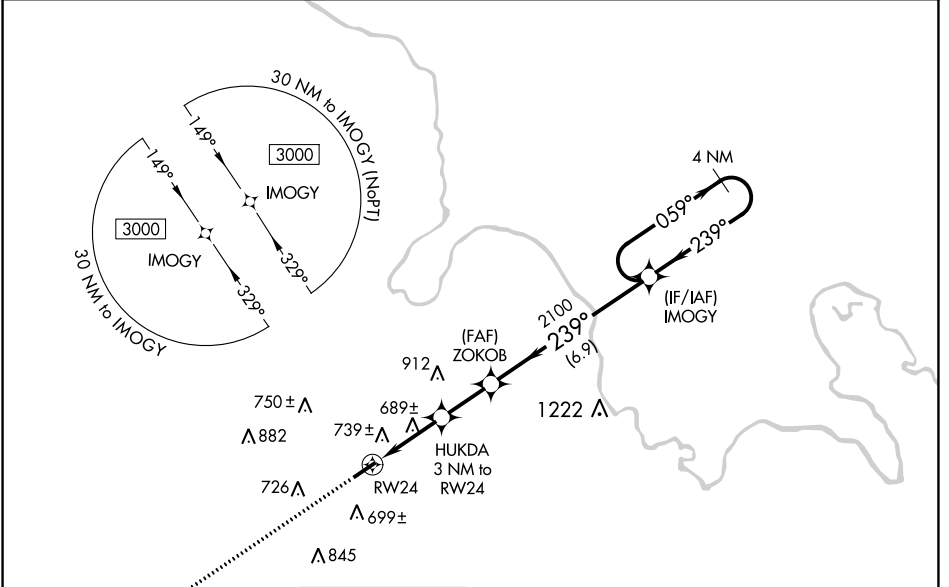
WAAS CH 99627 W24A	APP CRS 239°	Rwy Idg 4600 TDZE 425 Apt Elev 428
--	------------------------	---

RNAV (GPS) RWY 24

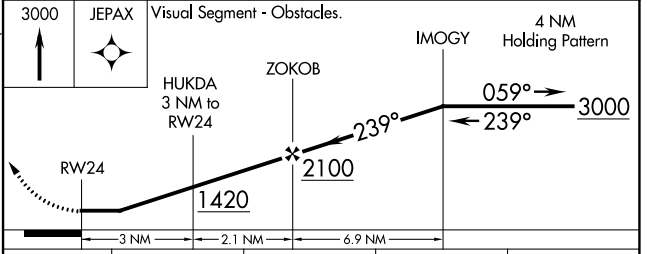
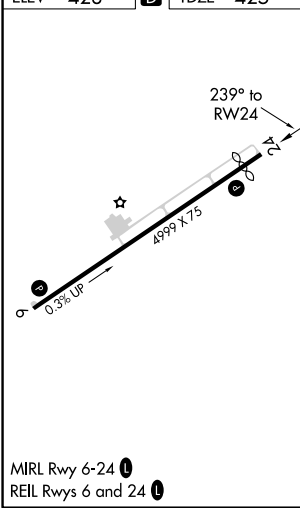
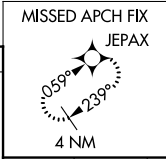
MUHLENBERG COUNTY (M21)

RNP APCH - GPS.	When local altimeter setting not received, use Owensboro altimeter setting and increase all MDAs 80 feet. Increase LP Cats C/D visibility $\frac{3}{8}$ SM and LNAV Cats C/D and Circling Cats C/D visibility $\frac{1}{4}$ SM. Procedure NA at night. Rwy 24, helicopter visibility reduction below 1 SM NA.	MISSED APPROACH: Climb to 3000 direct JEPAX and hold.
-----------------	---	--

AWOS-3 120.45	CAMPBELL APP CON ★ 118.1 269.525	UNICOM 123.0 (CTAF)
-------------------------	--	-------------------------------



ELEV 428		TDZE 425
----------	--	----------



CATEGORY	A	B	C	D
LP MDA	940-1	515 (600-1)	940- $\frac{1}{8}$	515 (600- $\frac{1}{8}$)
LNAV MDA	1000-1	575 (600-1)	1000- $\frac{1}{8}$	575 (600- $\frac{1}{8}$)
CIRCLING	1040-1 612 (700-1)	1100-1 672 (700-1)	1180- $\frac{1}{4}$ 752 (800- $\frac{1}{4}$)	1200- $\frac{1}{2}$ 772 (800- $\frac{1}{2}$)

SE-1, 28 NOV 2024 to 26 DEC 2024

SE-1, 28 NOV 2024 to 26 DEC 2024