

WAAS CH <b>56527</b> <b>W06A</b>	APP CRS <b>059°</b>	Rwy Idg <b>4999</b> TDZE <b>420</b> Apt Elev <b>428</b>
--	------------------------	---

# RNAV (GPS) RWY 6

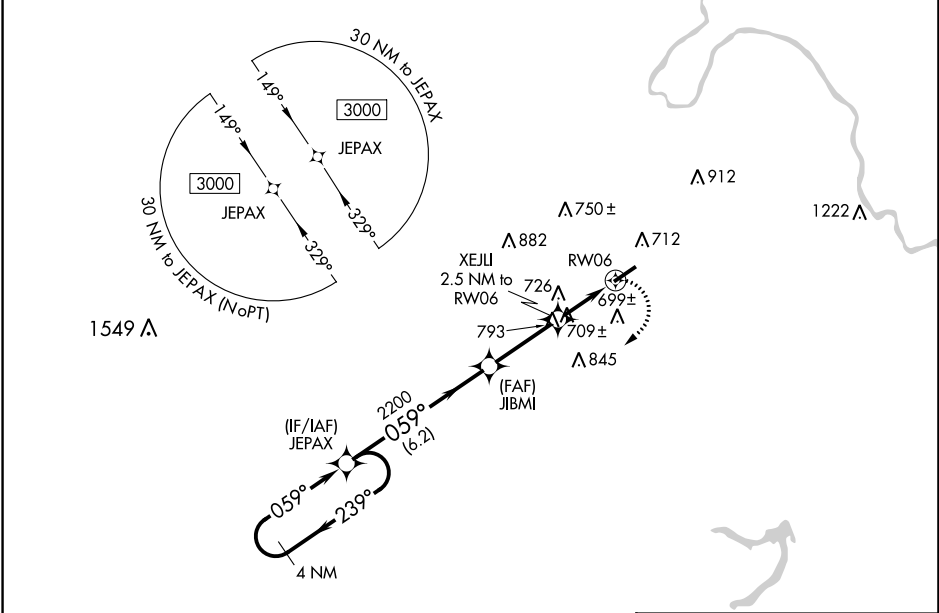
MUHLENBERG COUNTY (M21)

RNP APCH - GPS.

**▽** When local altimeter setting not received, use Owensboro altimeter setting and increase all MDAs 80 feet and LP visibility Cat C/D  $\frac{1}{4}$ , LNAV visibility Cat B/C/D  $\frac{1}{4}$ , and Circling visibility Cat B/C/D  $\frac{1}{4}$ . Rwy 6, helicopter visibility reduction below  $\frac{3}{4}$  SM NA. Circling Rwy 24 NA at night.

**MISSED APPROACH:**  
Climbing right turn to 3000 direct JEPAX and hold.

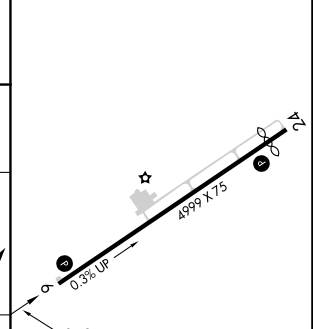
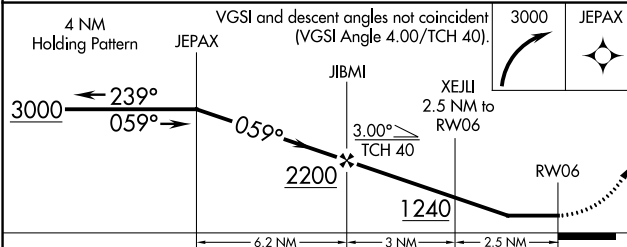
AWOS-3 <b>120.45</b>	CAMPBELL APP CON * <b>118.1 269.525</b>	UNICOM <b>123.0 (CTAF) 0</b>
-------------------------	--	---------------------------------



SE-1, 28 NOV 2024 to 26 DEC 2024

SE-1, 28 NOV 2024 to 26 DEC 2024

ELEV 428	<b>D</b>	TDZE 420
----------	----------	----------



CATEGORY	A	B	C	D
LP MDA	960-1	540 (600-1)	960-1½	540 (600-1½)
LNAV MDA	1100-1	680 (700-1)	1100-1⅞	680 (700-1⅞)
<b>C</b> CIRCLING	1100-1	672 (700-1)	1180-2¼ 752 (800-2¼)	1200-2½ 772 (800-2½)

MIRL Rwy 6-24 0  
REL. Rws 6 and 24 0