

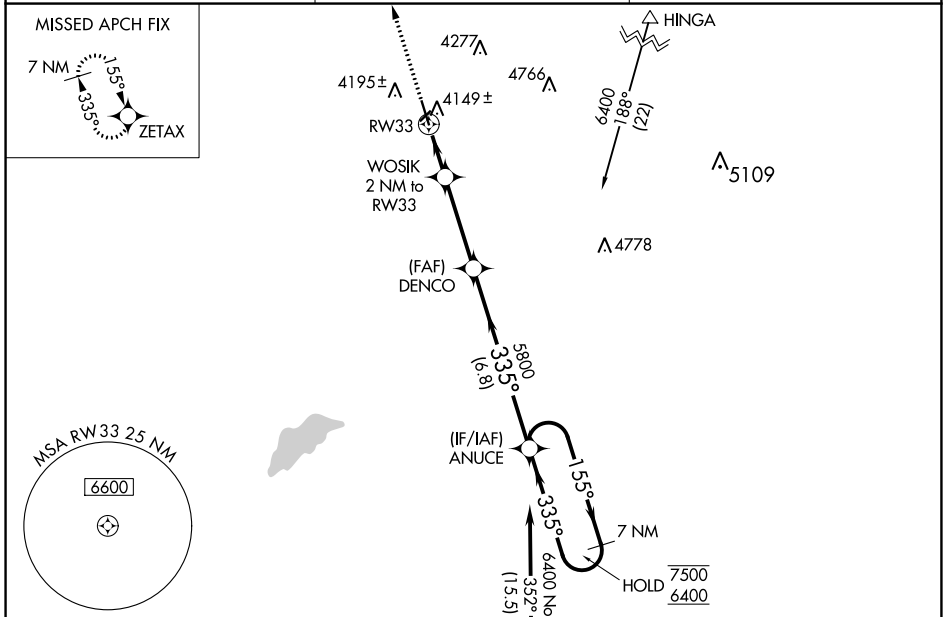
WAAS CH 65730 W33A	APP CRS 335°	Rwy Idg TDZE Apt Elev	5201 4028 4038
--	------------------------	-----------------------------	---

RNAV (GPS) RWY 33

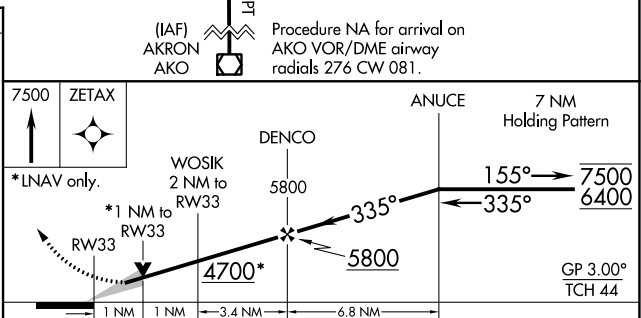
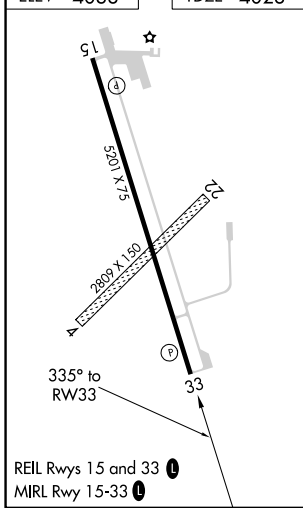
STERLING MUNI (STK)

RNP APCH.	MISSED APPROACH: Climb to 7500 direct ZETAX and hold, continue climb-in-hold to 7500.
<p>⚠ Circling NA to Rws 4 and 22. For uncompensated Baro-VNAV systems, LNAV/VNAV NA below -22°C or above 54°C.</p>	

AWOS-3 118,525	DENVER CENTER 118,475 225.4	UNICOM 122.8 (CTAF) 0
--------------------------	---------------------------------------	---------------------------------



ELEV 4038	TDZE 4028
------------------	------------------



CATEGORY	A	B	C	D
LPV DA		4278- ³ / ₄	250 (300- ³ / ₄)	
LNAV/VNAV DA		4332-1	304 (300-1)	
LNAV MDA		4400-1	372 (400-1)	
C CIRCLING	4520-1 482 (500-1)	4580-1 542 (600-1)	4620-1½ 582 (600-1½)	4720-2½ 682 (700-2½)

SW-1, 28 NOV 2024 to 26 DEC 2024

SW-1, 28 NOV 2024 to 26 DEC 2024