

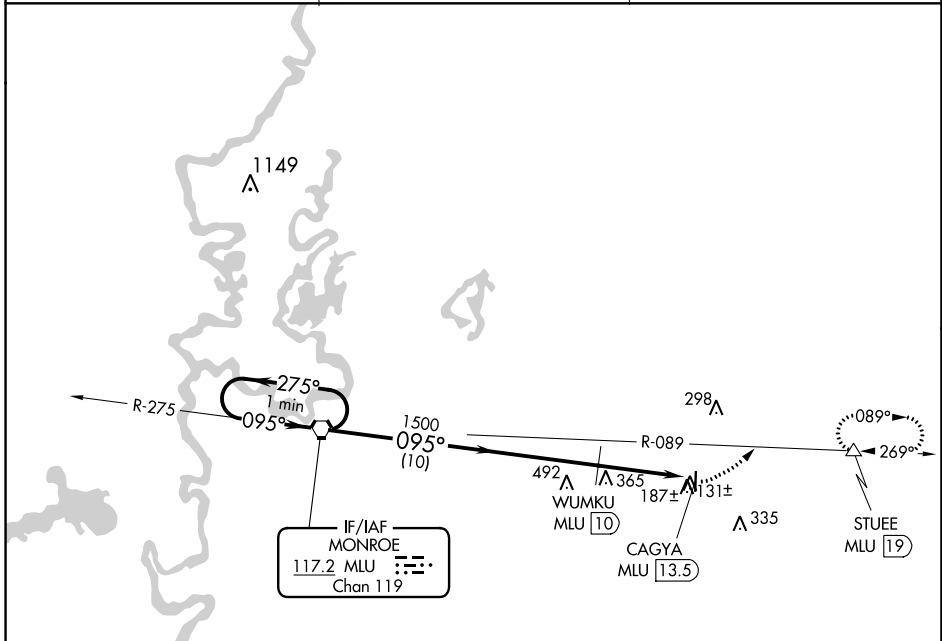
VORTAC MLU 117.2 Chan 119	APP CRS 095°	Rwy Idg TDZE Apt Elev N/A N/A 83
---	------------------------	--

VOR/DME-A
JOHN H HOOKS JR MEML (M79)

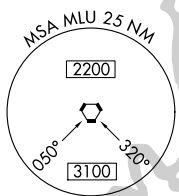
NA Circling to Rwy 18 NA at night. Helicopter visibility reduction below 1 SM NA. Use Monroe altimeter setting; when not received use Bastrop altimeter setting and increase all MDA 20 feet.

MISSED APPROACH: Climbing left turn to 3000 on MLU VORTAC R-089 to STUEE/MLU 19 DME and hold, continue climb-in-hold to 3000.

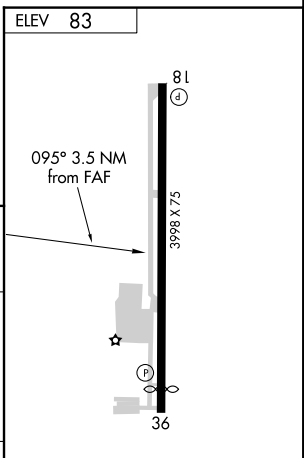
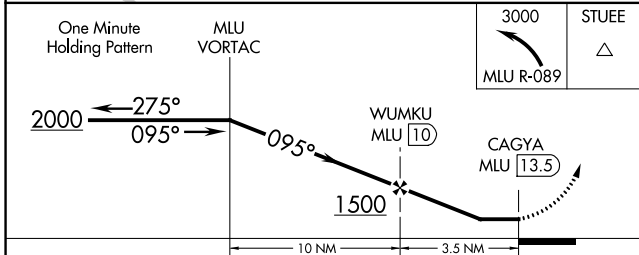
MLU ASOS 125.05	MONROE APP CON ★ 126.9	UNICOM 122.8 (CTAF) 0
---------------------------	----------------------------------	--



IF/IAF
MONROE
117.2 MLU
Chan 119



NoPT for arrival on MLU VORTAC
airway radials 157 CW 318.



CATEGORY	A	B	C	D
10 min	10 NM	3.5 NM		
C CIRCLING	600-1	517 (600-1)	NA	

REIL Rwy 18 and 36 **0**
MIRL Rwy 18-36 **0**

SC-4, 28 NOV 2024 to 26 DEC 2024

SC-4, 28 NOV 2024 to 26 DEC 2024