

WAAS CH 82311 W22A	APP CRS 218°	Rwy Idg TDZE 1025 Apt Elev 1025	6000
--	------------------------	---	-------------

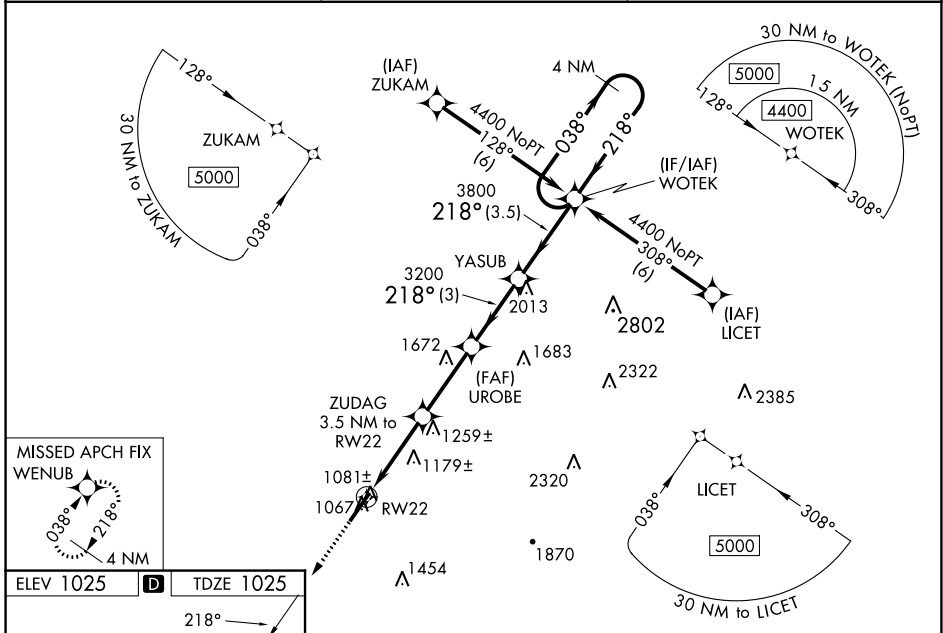
RNAV (GPS) RWY 22

UPPER CUMBERLAND RGNL (SRB)

⚠ Baro-VNAV NA when using Crossville altimeter setting. For uncompensated Baro-VNAV systems, LNAV/VNAV NA below -17°C (2°F) or above 54°C (130°F). DME/DME RNP-0.3 NA. When local altimeter setting not received, use Crossville altimeter setting and increase LPV DA to 1447 feet, LNAV/VNAV DA to 1633 feet, increase LPV and LNAV/VNAV visibility 3/4 SM. Increase all MDA 180 feet and LNAV Cat C visibility 1/4 SM, Cat D visibility 1/2 SM. Increase Circling Cat C visibility 3/4 SM and Circling Cat D visibility 1/4 SM. VDP NA when using Crossville altimeter setting.

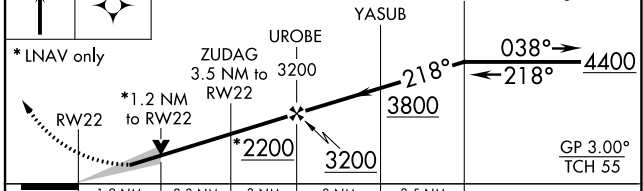
⚠ MISSED APPROACH: Climb to 4000 direct WENUB and hold.

AWOS-3P 128.25	MEMPHIS CENTER 132.9 290.3	UNICOM 122.975 (CTAF) 0
--------------------------	--------------------------------------	-----------------------------------



ELEV 1025	D	TDZE 1025
-----------	----------	-----------

4000 WENUB VGSI and RNAV glidepath not coincident (VGSI Angle 3.00/TCH 25). 4 NM WOTEK Holding Pattern



CATEGORY	A	B	C	D
LPV DA	1275-3/4		250 (300-3/4)	
LNAV/VNAV DA	1461-1 1/2		436 (500-1 1/2)	
LNAV MDA	1440-1	415 (500-1)	1440-1 1/4	415 (500-1 1/4)
CIRCLING	1480-1	455 (500-1)	1600-1 1/2	1880-2 3/4
			575 (600-1 1/2)	855 (900-2 3/4)

HIRL Rwy 4-22 0
REIL Rwys 4 and 22 0
RLS Rwy 4 0

SE-1, 28 NOV 2024 to 26 DEC 2024

SE-1, 28 NOV 2024 to 26 DEC 2024