

APP CRS	Rwy Idg	1956
359°	TDZE	N/A
	Apt Elev	397

RNAV (GPS)-A

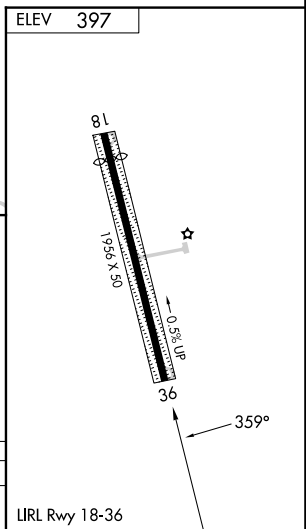
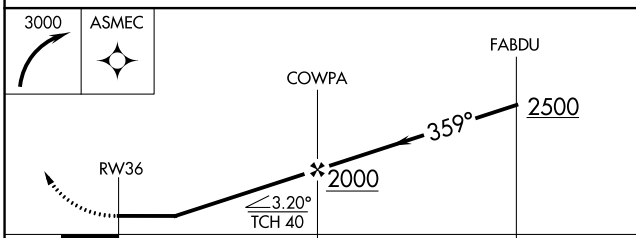
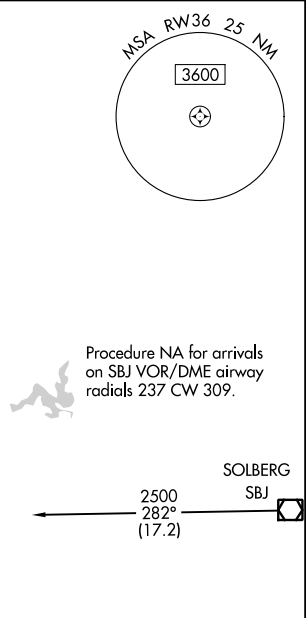
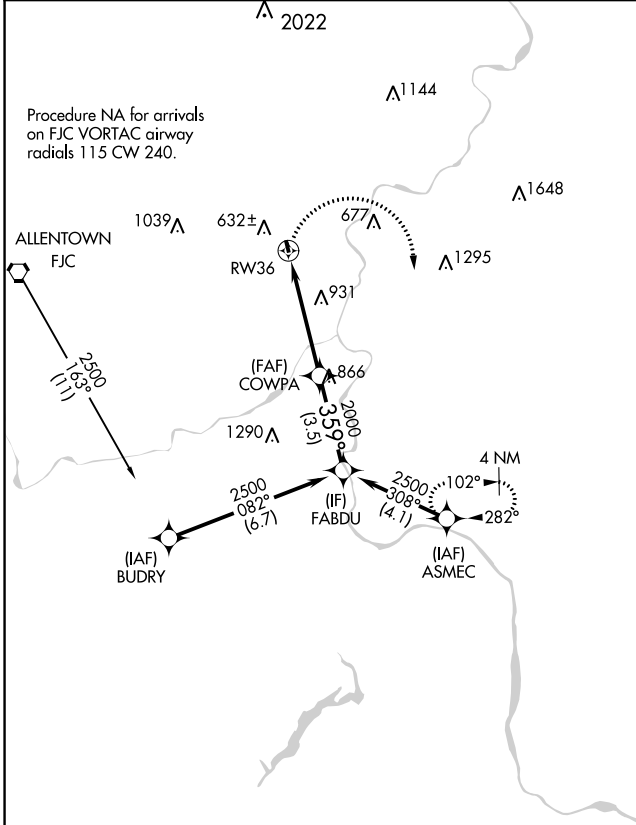
BRADEN AIRPARK (N43)

NA DME/DME RNP-0.3 NA. Procedure NA at night. Helicopter visibility reduction below 1 SM NA. Use Allentown Lehigh Valley Intl altimeter setting; when not received, procedure NA.

MISSED APPROACH: Climbing right turn to 3000 direct ASMEC and hold.

ALLENTOWN APP CON		
119.65	124.45	351.8

UNICOM
123.0 (CTAF)



CATEGORY	A	B	C	D
CIRCLING	1 220-1 823 (900-1)	1 220-1 ¼ 823 (900-1 ¼)	NA	

NE-4, 28 NOV 2024 to 26 DEC 2024

NE-4, 28 NOV 2024 to 26 DEC 2024