

| | | |
|-------------|----------|-------------|
| APP CRS | Rwy Idg | 4006 |
| 167° | TDZE | 442 |
| | Apt Elev | 442 |

RNAV (GPS) RWY 17

RUSK COUNTY (R.F.I)

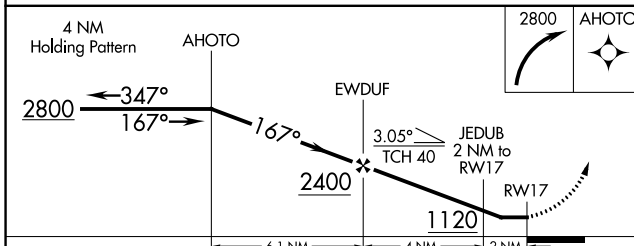
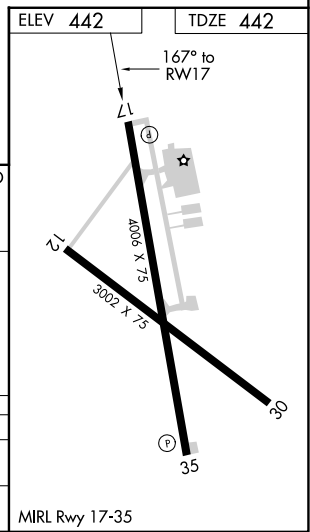
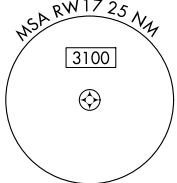
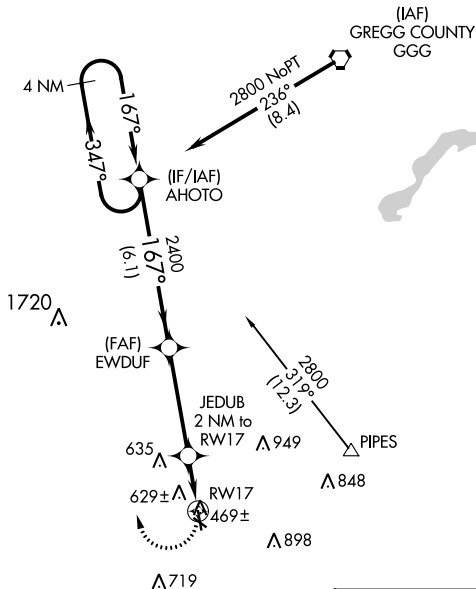
RNP APCH

▼ Rwy 17 helicopter visibility reduction below 1 SM NA. When local altimeter setting not received, use Longview altimeter setting and increase all MDA 60 feet.
 ▲ Rwy 17 Straight-in minimums NA at night. Circling Rwy 12, 17 and 30 NA at night.

MISSED APPROACH: Climbing right turn to 2800 direct AHOTO and hold.

| | | |
|--------------------------|---|-------------------------------|
| AWOS-3 119.375 | LONGVIEW APP CON★ 124.275 257.975 | UNICOM 122.8 (CTAF) |
|--------------------------|---|-------------------------------|

Procedure NA for arrivals at GGG VORTAC on V94 eastbound.



| CATEGORY | A | B | C | D |
|----------|-------|-------------|-------------------------|----|
| LNVA MDA | 980-1 | 538 (600-1) | 980-1½ 538 (600-1½) | NA |
| CIRCLING | 980-1 | 538 (600-1) | 1200-2½ 758 (800-2½) | NA |

SC-2, 28 NOV 2024 to 26 DEC 2024

SC-2, 28 NOV 2024 to 26 DEC 2024