

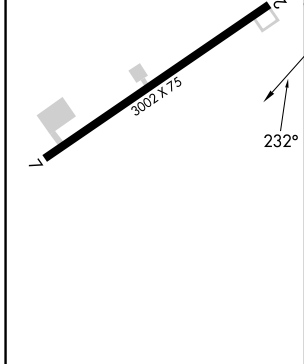
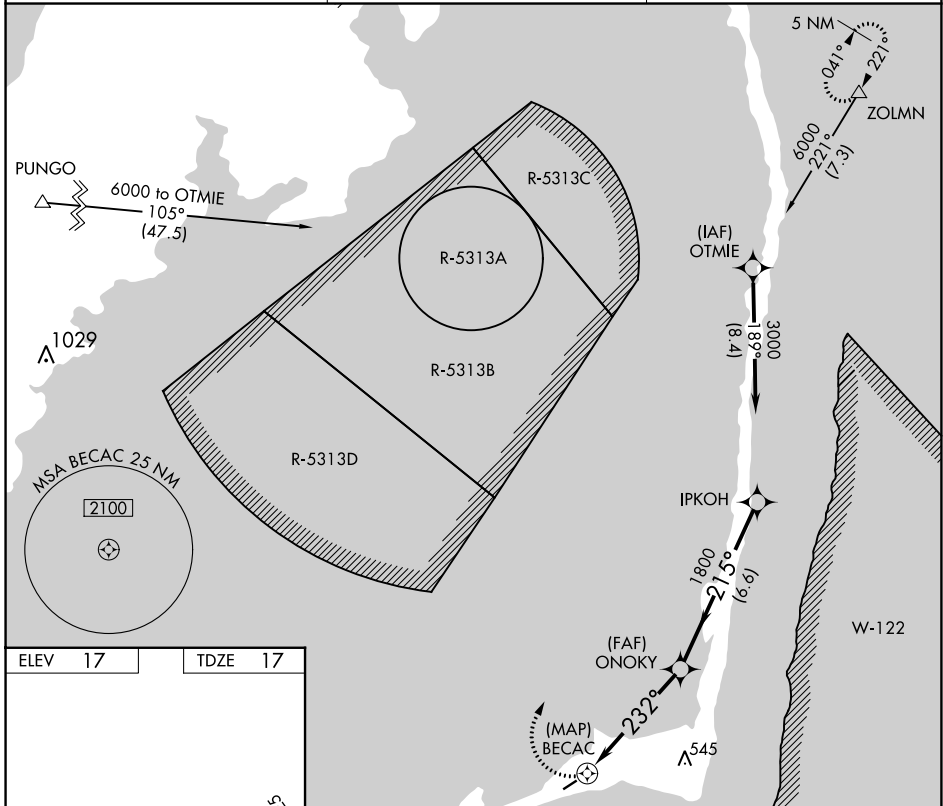
APP CRS 232°	Rwy Idg 3002
	TDZE 17
	Apt Elev 17

RNAV (GPS) RWY 25

BILLY MITCHELL (HSE)

Procedure NA at night. GPS or RNP-0.3 required. DME/DME RNP-0.3 NA.	MISSED APPROACH: Climbing right turn to 6000 via course 032° to ZOLMN WP and hold.
---	---

ASOS 118.375	CHERRY POINT APP CON 119.75 360.775	CTAF 122.9
------------------------	---	----------------------



	6000	ZOLMN △	IPKOH	
	crs 032°			
		ONOKY	3000	
		BECAC	Procedure Turn NA	
	232°	1800		
	3.00°	TCH 40		
	0.5	5 NM	6.6 NM	
CATEGORY	A	B	C	D
LNAV MDA	520-1	503 (600-1)	520-1½ 503 (600-1½)	NA
CIRCLING	560-1	543 (600-1)	560-1½ 543 (600-1½)	NA

SE-2, 28 NOV 2024 to 26 DEC 2024

SE-2, 28 NOV 2024 to 26 DEC 2024