

NDB/DME DUT <b>283</b>	APP CRS <b>171°</b>	Rwy Idg TDZE Apt Elev	N/A N/A <b>22</b>
Chan <b>86 (113.9)</b>			

# NDB-A

## UNALASKA (DUT) (PADU)

**⚠** Circling NA northeast of Rwy 13-31. Procedure NA at night. Helicopter visibility reduction below 1 SM NA. When local altimeter setting not received, use Akutan altimeter setting and increase all MDAs 100 feet. Descend to 6000 in holding pattern.

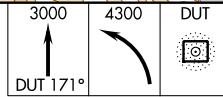
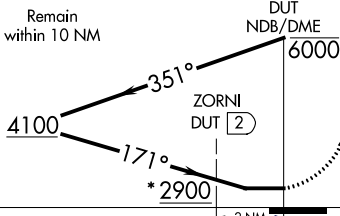
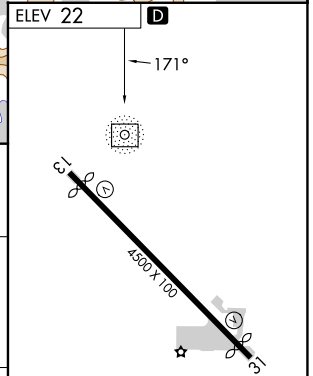
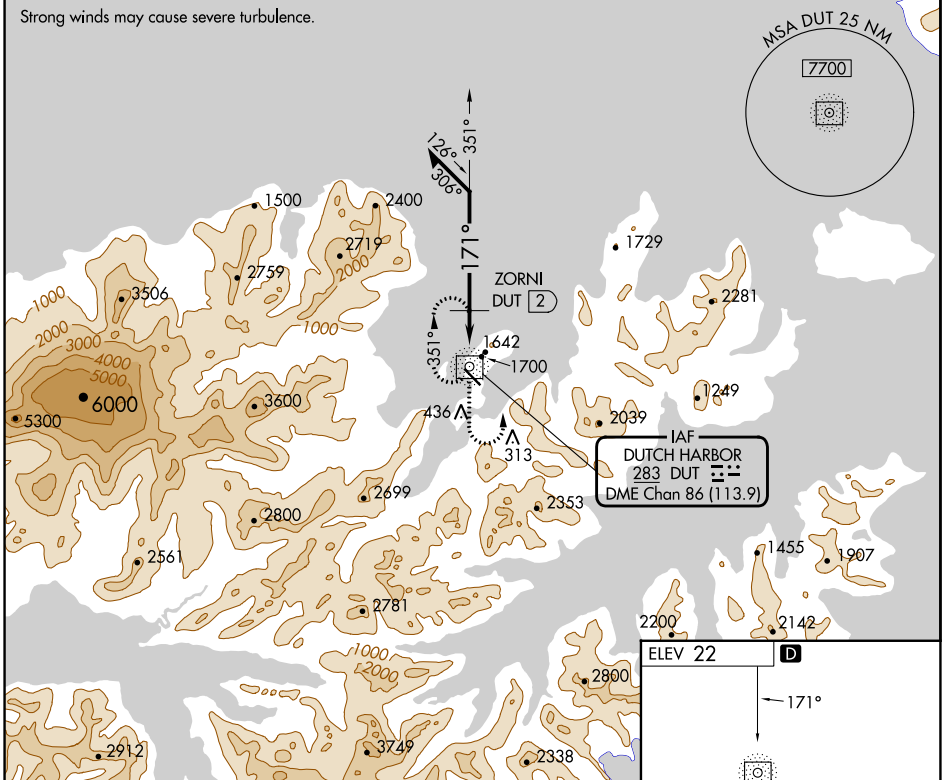
**MISSED APPROACH:** Climb to 3000 on DUT NDB/DME bearing 171° then climbing left turn to 4300 direct DUT NDB/DME and hold.

AWOS-3P  
**125.8**

ANCHORAGE CENTER  
**121.4**

CTAF  
**122.6 0\***

Strong winds may cause severe turbulence.



CATEGORY	A	B	C	D
<b>C</b> CIRCLING	2900-1¼ 2878 (2900-1¼)	2900-1½ 2878 (2900-1½)	2900-3	2878 (2900-3)
ZORNI FIX MINIMUMS (DME REQUIRED)				
<b>C</b> CIRCLING	2200-1¼ 2178 (2200-1¼)	2200-1½ 2178 (2200-1½)	2320-3 2298 (2300-3)	2500-3 2478 (2500-3)

MIRL Rwy 13-31 **0**  
REIL Rwys 13 and 31 **0**

AK, 31 OCT 2024 to 26 DEC 2024

AK, 31 OCT 2024 to 26 DEC 2024