

APP CRS <b>164°</b>	Rwy Idg TDZE Apt Elev	<b>N/A</b> <b>N/A</b> <b>22</b>
------------------------	-----------------------------	---------------------------------------

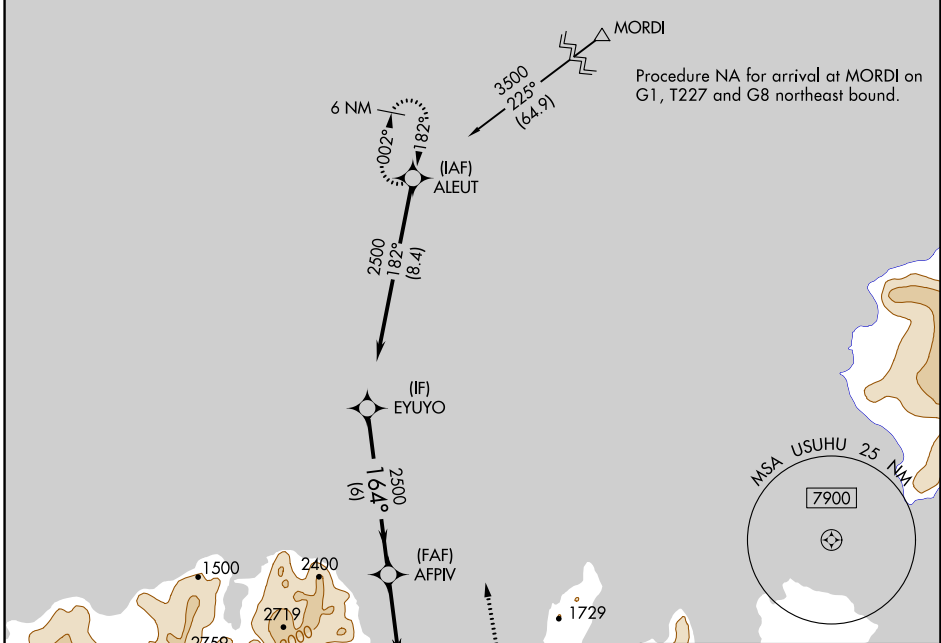
# RNAV (GPS)-B

UNALASKA (DUT) (PADU)

**⚠** Circling NA northeast of Rwy 13-31. DME/DME RNP-0.3 NA.  
**⚠** Procedure NA at night. When local altimeter setting not received, use Akutan altimeter setting and increase all MDAs 100 feet.

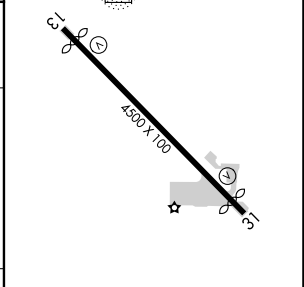
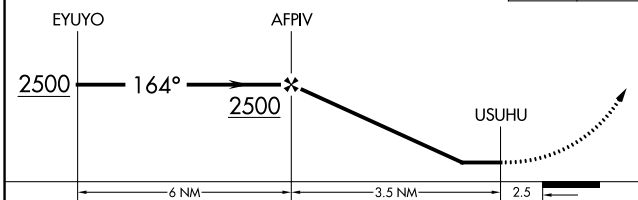
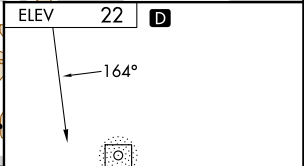
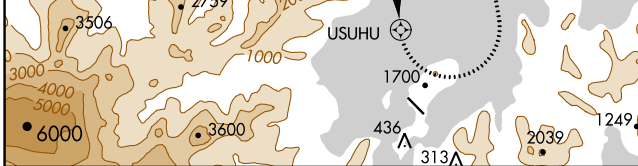
**MISSED APPROACH:** Climbing left turn to 3600 direct ALEUT and hold.

AWOS-3P <b>125.8</b>	ANCHORAGE CENTER <b>121.4</b>	CTAF <b>122.6 0 *</b>
-------------------------	----------------------------------	--------------------------



AK, 31 OCT 2024 to 26 DEC 2024

AK, 31 OCT 2024 to 26 DEC 2024



CATEGORY	A	B	C	D
<b>C</b> CIRCLING	2000-3	1978 (2000-3)	2320-3 2298 (2300-3)	2500-3 2478 (2500-3)

MIRL Rwy 13-31 **0**  
 REIL Rwys 13 and 31 **0**