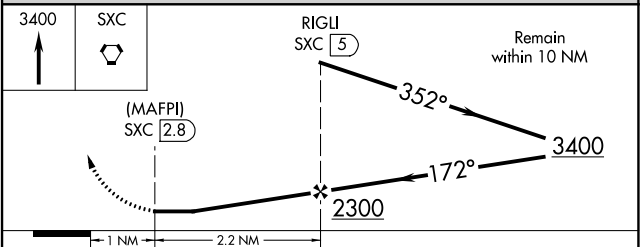
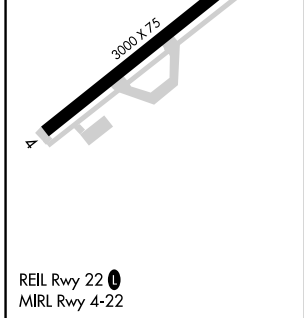
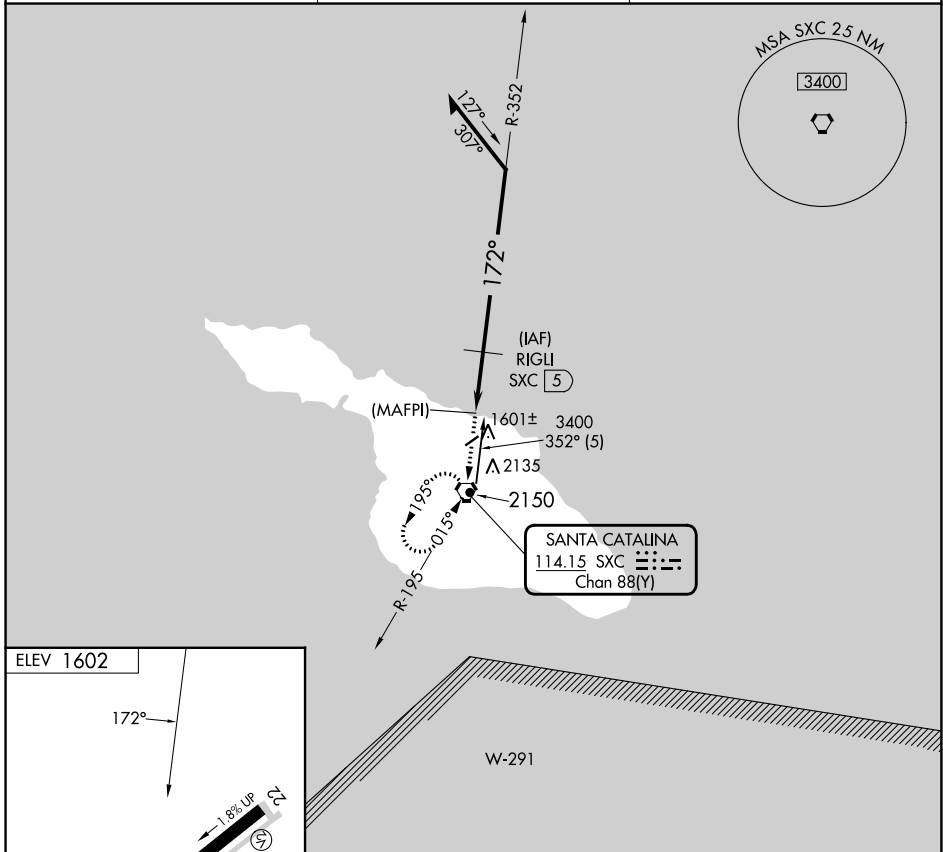


VORTAC SXC <b>114.15</b> Chan <b>88(Y)</b>	APP CRS <b>172°</b>	Rwy Idg TDZE Apt Elev <b>N/A</b> <b>N/A</b> <b>1602</b>
--	------------------------	--

# VOR/DME or GPS-B CATALINA (AVX)

<p><b>NA</b> Circling southeast runway 4-22 not authorized.</p>	<p>MISSED APPROACH: Climb to 3400 direct SXC VORTAC and hold.</p>
---	---

<p>ASOS <b>120.675</b></p>	<p>SOCAL APP CON <b>127.4 323.275</b></p>	<p>UNICOM <b>122.7 (CTAF)</b></p>
--------------------------------	---	---------------------------------------



CATEGORY	A	B	C	D
CIRCLING	2220-1	618 (700-1)	NA	

SW-3, 28 NOV 2024 to 26 DEC 2024

SW-3, 28 NOV 2024 to 26 DEC 2024