

APP CRS	Rwy Idg	<b>4005</b>
<b>227°</b>	TDZE	<b>12</b>
	Apt Elev	<b>13</b>

# RNAV (GPS) RWY 23

DARE COUNTY RGNL (MQI)

RNP APCH - GPS.

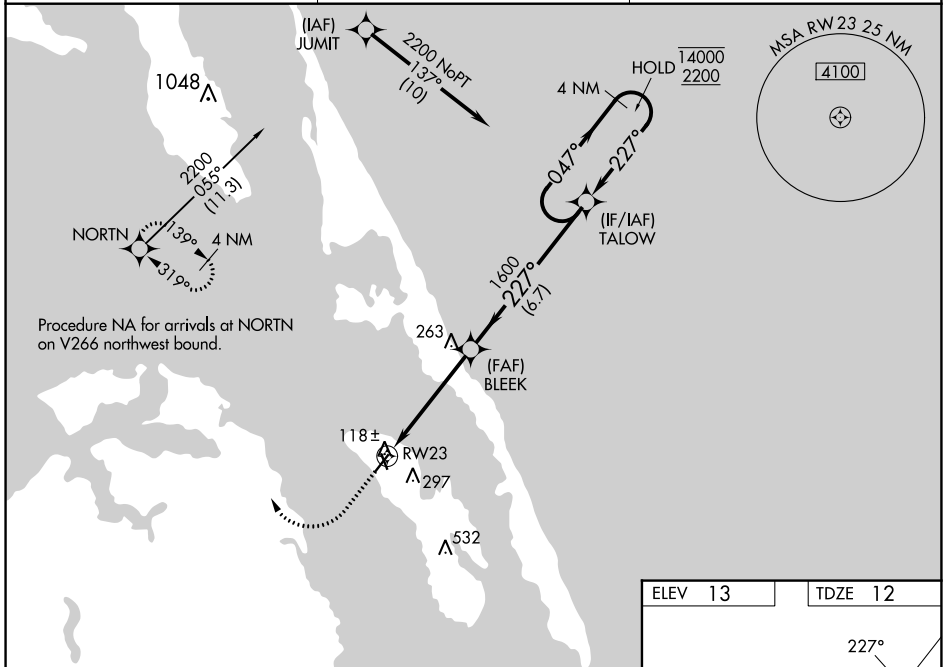
**⚠**  
**⚠** Circling Rwy 17, 35 NA at night. Rwy 23 helicopter visibility reduction below 1 SM NA. Straight-in/Circling Rwy 23 NA at night.

MISSED APPROACH: Climb to 600 then climbing right turn to 4000 direct NORTN and hold, continue climb-in-hold to 4000.

AWOS-3  
**128.275**

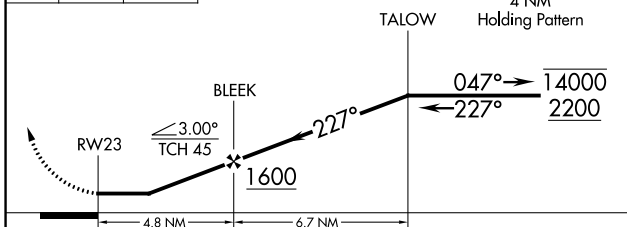
CHERRY POINT APP CON  
**124.725 350.35**

UNICOM  
**122.8(CTAF) 0**



<b>600</b>	<b>4000</b>	<b>NORTN</b>

VGSI and descent angles not coincident (VGSI Angle 4.00/TCH 32).



ELEV 13	TDZE 12
---------	---------

REIL Rwy 5 and 23 0  
MIRL Rwy 5-23 and 17-35 0

CATEGORY	A	B	C	D
RNAV MDA	520-1	508 (600-1)	520-1 <sup>3</sup> / <sub>8</sub> 508 (600-1 <sup>3</sup> / <sub>8</sub> )	NA
<b>C</b> CIRCLING	600-1	587 (600-1)	600-1 <sup>1</sup> / <sub>2</sub> 587 (600-1 <sup>1</sup> / <sub>2</sub> )	NA

SE-2, 28 NOV 2024 to 26 DEC 2024

SE-2, 28 NOV 2024 to 26 DEC 2024