

CLARKSVILLE, TENNESSEE

RNAV (GPS) X RWY 23

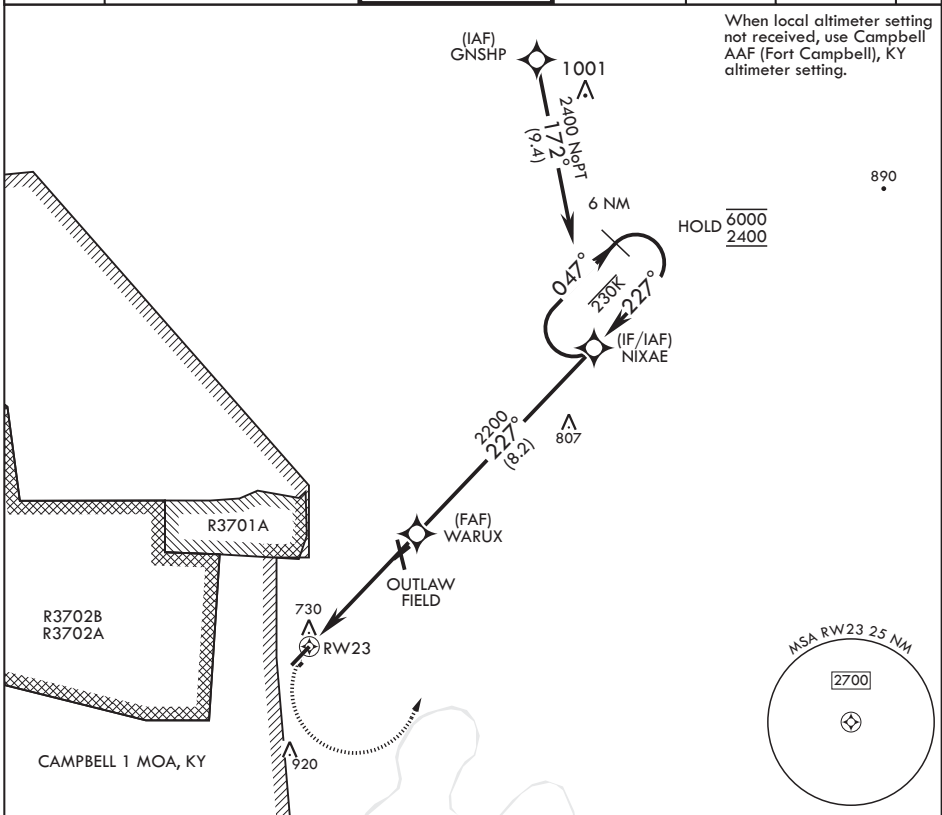
APCH CRS	Rwy Idg	5000
227°	TDZE	587
	Arprt Elev	595

AL-6373 (USA)

SABRE AAF (FORT CAMPBELL) (KEOD)

RNP APCH-GPS	MISSED APPROACH: Climbing left turn to 2400 direct NIXAE and hold.
RADAR required	
* Circling not authorized to Rwy 5R/23L.	

SABRE ATIS 306.5	CAMPBELL APP CON/DEP CON 134.35 307.025	TOWER * 124.675 (CTAF) 290.45	GND CON 142.975 267.3	CLNC DEL 237.6	EAGLE RADIO 285.7	ASR
---------------------	--	----------------------------------	--------------------------	-------------------	----------------------	-----

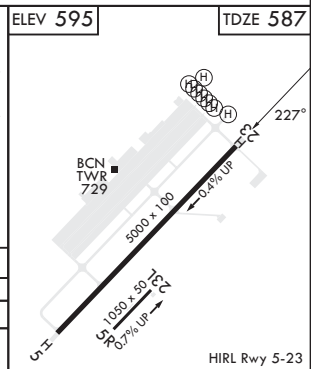
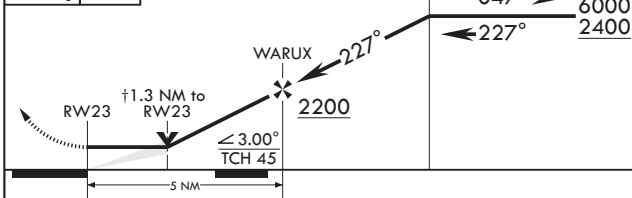


When local altimeter setting not received, use Campbell AAF (Fort Campbell), KY altimeter setting.

890

HOLD 6000 / 2400

2400	NIXAE	† VDP NA when using Campbell AAF (Fort Campbell) altimeter setting.	6 NM Holding Pattern	ELEV 595	TDZE 587
------	-------	---	----------------------	----------	----------



CATEGORY	A	B	C	D
LNAV MDA	1060-1 473 (500-1)	1060-1 473 (500-1)	1060-1 473 (500-1)	1060-1 473 (500-1)
CIRCLING*	1160-1 565 (600-1)	1240-1 645 (700-1)	1300-2 705 (800-2)	1300-2 705 (800-2)

CLARKSVILLE, TENNESSEE

36°34'N - 87°29'W

SABRE AAF (FORT CAMPBELL) (KEOD)

Amdt 1 07SEP23

RNAV (GPS) X RWY 23

SE-1, 28 NOV 2024 to 26 DEC 2024

SE-1, 28 NOV 2024 to 26 DEC 2024