

CLARKSVILLE, TENNESSEE

# RNAV (GPS) X RWY 5

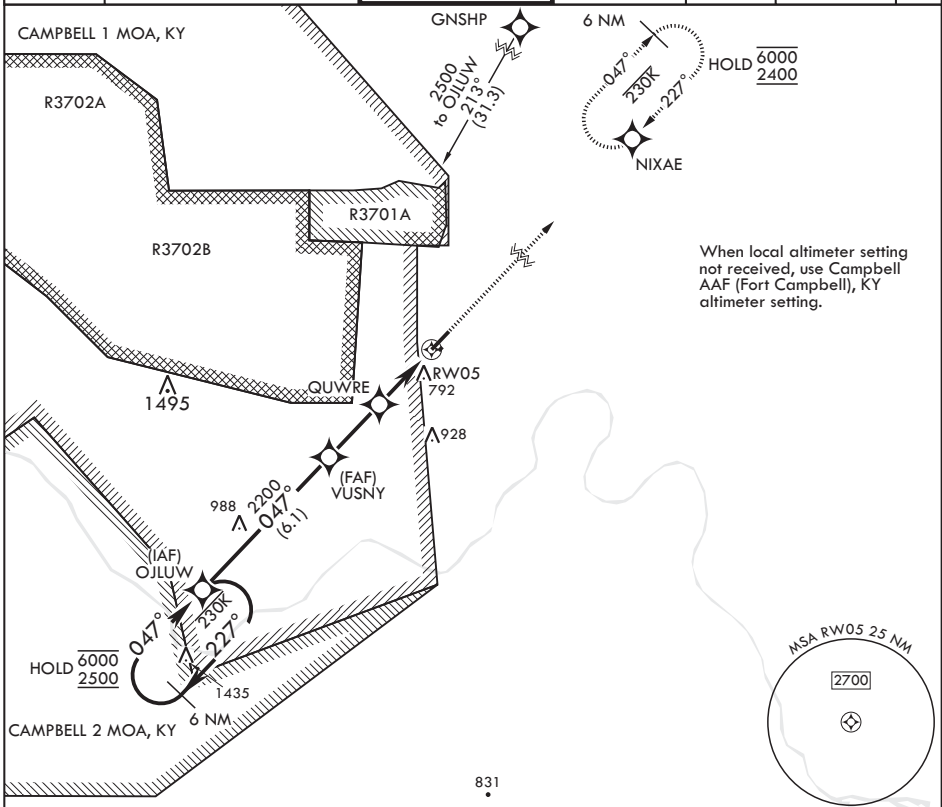
APCH CRS <b>047°</b>	Rwy Idg TDZE Arprt Elev	<b>5000</b> <b>595</b> <b>595</b>
-------------------------	-------------------------------	---

AL-6373 (USA)

SABRE AAF (FORT CAMPBELL) (KEOD)

RNP APCH-GPS	MISSED APPROACH: Climb to 2400 direct NIXAE and hold.
RADAR required	
* Circling not authorized to Rwy 05R/23L.	

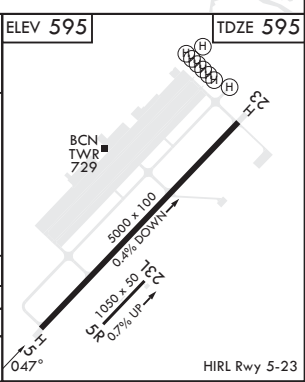
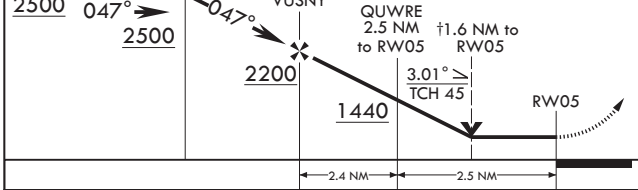
SABRE ATIS <b>306.5</b>	CAMPBELL APP CON/DEP CON <b>134.35 307.025</b>	TOWER * <b>124.675 290.45</b>	GND CON <b>142.975 267.3</b>	CLNC DEL <b>237.6</b>	EAGLE RADIO <b>285.7</b>	ASR
----------------------------	---	----------------------------------	---------------------------------	--------------------------	-----------------------------	-----



SE-1, 28 NOV 2024 to 26 DEC 2024

SE-1, 28 NOV 2024 to 26 DEC 2024

6 NM Holding Pattern OJLUW	† VDP NA when using Campbell AAF (Fort Campbell) altimeter setting.	2400	NIXAE	ELEV 595	TDZE 595
6000 ← 227°		↑	⊕		
2500 → 047°					



CATEGORY	A	B	C	D
LNAV MDA	1180-1 585 (600-1)	1180-1 585 (600-1)	1180-1 585 (600-1)	1180-1 585 (600-1)
CIRCLING*	1180-1 585 (600-1)	1240-1 645 (700-1)	1300-2 705 (800-2)	1300-2 705 (800-2)

CLARKSVILLE, TENNESSEE 36°34'N - 87°29'W SABRE AAF (FORT CAMPBELL) (KEOD)

Amdt 1 10AUG23

# RNAV (GPS) X RWY 5

HIRL Rwy 5-23