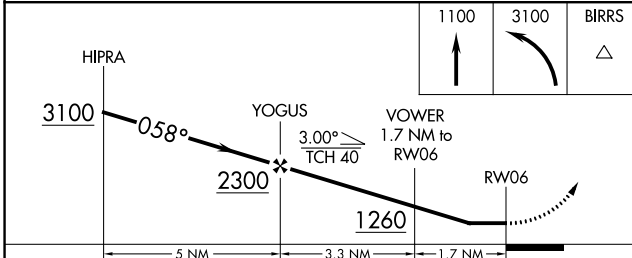
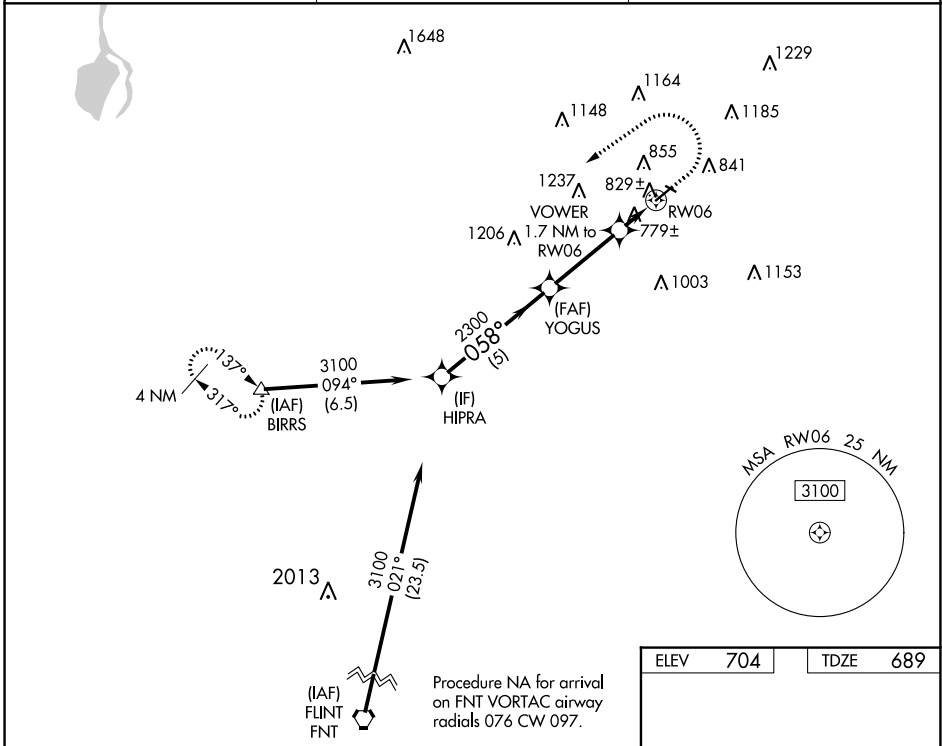


| | | | |
|--|------------------------|-----------------------------|---|
| WAAS CH 56441 W06A | APP CRS 058° | Rwy Idg TDZE Apt Elev | 4302 689 704 |
|--|------------------------|-----------------------------|---|

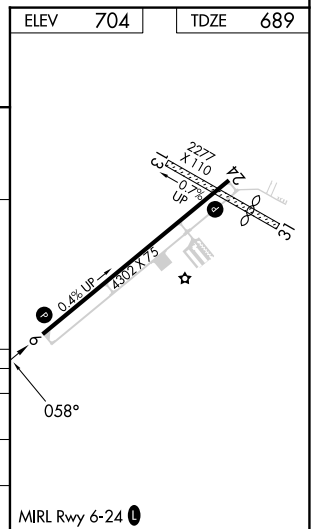
RNAV (GPS) RWY 6

TUSCOLA AREA (CFS)

| | | |
|---|---|---|
| RNP APCH - GPS. | | MISSED APPROACH: Climb to 1100 then climbing left turn to 3100 direct BIRRS and hold. |
| <p>▼ Circling NA to Rwy 13 and 31. Rwy 6 helicopter visibility reduction below 1 SM NA. Procedure NA at night.</p> | | |
| AWOS-3 119.275 | GREAT LAKES APP CON★ 120.95 235.625 | UNICOM 123.0 (CTAF) ① |



| | | | | |
|-------------------|--------------------|-------------|-------------------------|----|
| CATEGORY | A | B | C | D |
| LP MDA | 1040-1 351 (400-1) | | NA | NA |
| LNAV MDA | 1080-1 | 391 (400-1) | 1080-1¼ 391 (400-1¼) | NA |
| C CIRCLING | 1200-1 | 496 (500-1) | 1220-1½ 516 (600-1½) | NA |



EC-1, 28 NOV 2024 to 26 DEC 2024

EC-1, 28 NOV 2024 to 26 DEC 2024