

WAAS CH 69339 W03A	APP CRS 038°	Rwy Idg TDZE 156 Apt Elev 160	4500
--	------------------------	---	-------------

RNAV (GPS) RWY 3

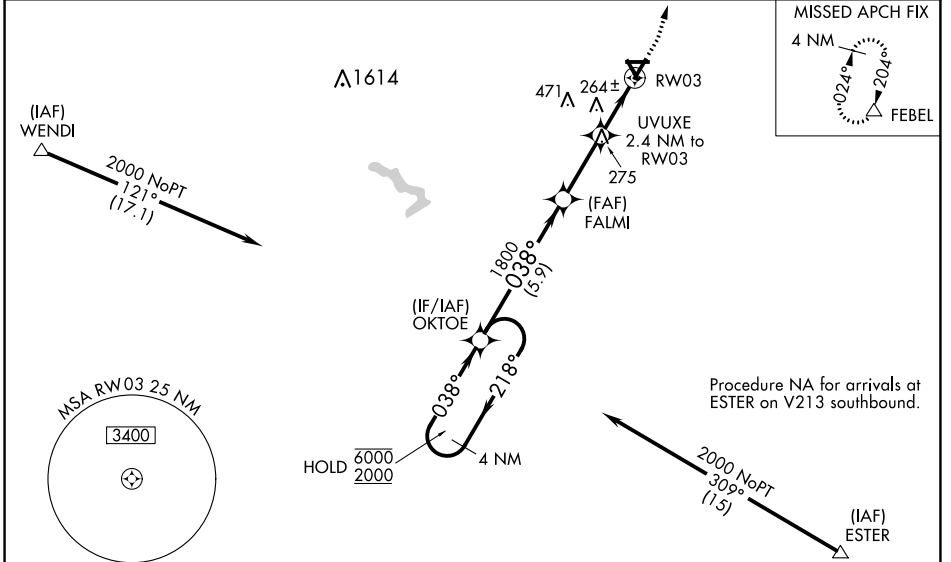
WILSON INDUSTRIAL AIR CENTER (W03)

RNP APCH.

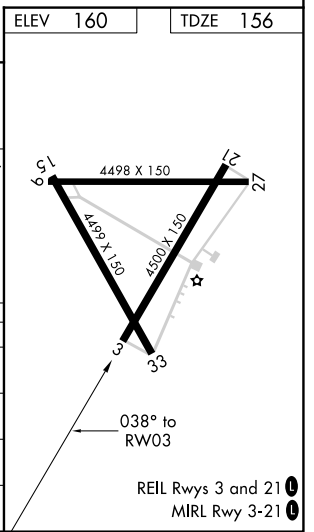
NA Baro-VNAV NA when using Rocky Mount altimeter setting. For uncompensated Baro-VNAV systems, LNAV/VNAV NA below -15°C or above 54°C. Obtain local altimeter setting on CTAF; when not received, use Rocky Mount altimeter setting: increase LPV DA to 421 and visibility all Cats 1/8 SM; increase LNAV/VNAV DA to 439; increase all MDA 20 feet and LNAV visibility Cats C and D 1/8 SM. Circling Rwy 9, 15, 27, 33 NA at night.

MISSED APPROACH: Climb to 700, then climbing left turn to 2500 direct FEBEL and hold.

WASHINGTON CENTER 123.85 279.65	UNICOM 123.0 (CTAF) 0
---	---------------------------------



ELEV 160		TDZE 156	
4 NM Holding Pattern			
OKTOE		FALMI	
6000 ← 218°	← 038° →	1800	UVUXE 2.4 NM to RW03
2000		1800	*960
GP 3.00°			RW03
TCH 40			
	5.9 NM	2.6 NM	2.4 NM
CATEGORY	A	B	C
LPV DA	406-3/4		250 (300-3/4)
LNAV/VNAV DA	424-7/8		268 (300-7/8)
LNAV MDA	520-1	364 (400-1)	520-2 364 (400-2)
CIRCLING	660-1	500 (500-1)	780-1 620 (700-1/4)
			780-2 620 (700-2)



SE-2, 28 NOV 2024 to 26 DEC 2024

SE-2, 28 NOV 2024 to 26 DEC 2024