

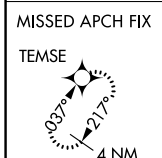
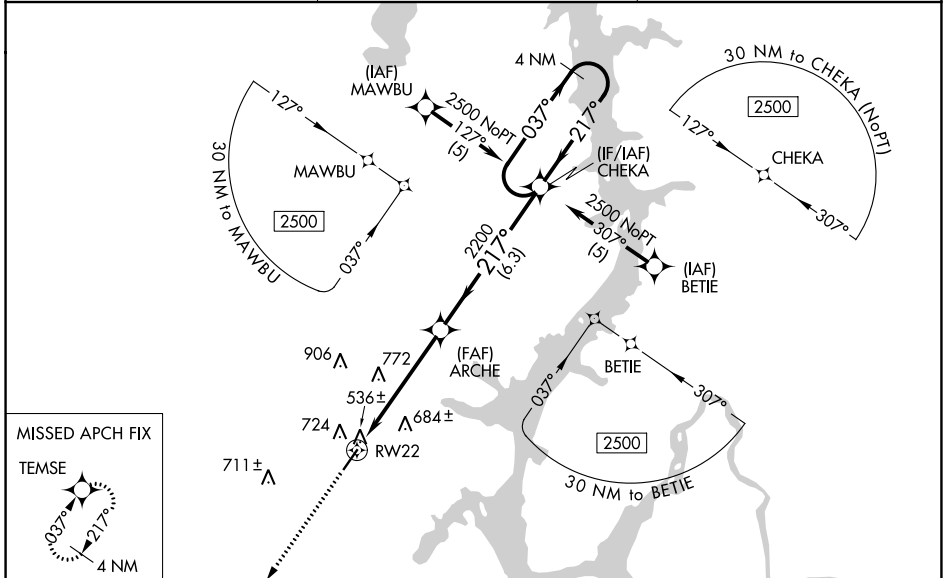
WAAS CH <b>82714</b> <b>W22A</b>	APP CRS <b>217°</b>	Rwy Idg <b>5001</b> TDZE <b>465</b> Apt Elev <b>468</b>
--	------------------------	---

AL-6386 (FAA)

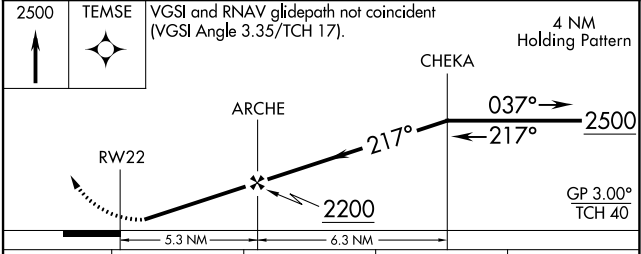
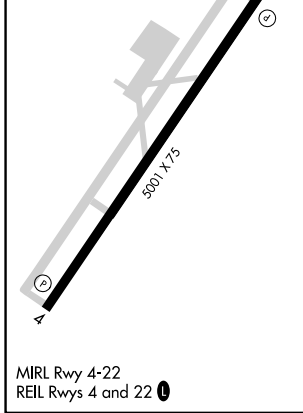
# RNAV (GPS) RWY 22

BENTON COUNTY (ØM4)

RNP APCH.		MISSED APPROACH: Climb to 2500 direct TEMSE and hold.
<p>Baro-VNAV NA. Rwy 22 helicopter visibility reduction below 1 SM NA.                  Use Beech River Rgnl altimeter setting; when not received, use Jackson altimeter setting and increase all DA 58 feet and all MDA 60 feet and increase LPV all Cats visibility ½ mile, LNAV/VNAV all Cats visibility ¼ mile, and LNAV Cat C visibility ¼ mile. Procedure NA at night.</p>		
PVE AWOS-3 <b>118.125</b>	MEMPHIS CENTER <b>125.85 379.25</b>	UNICOM <b>122.8 (CTAF) Ø</b>



ELEV <b>468</b>	TDZE <b>465</b>
-----------------	-----------------



CATEGORY	A	B	C	D
LPV DA	833-1¼	368 (400-1¼)		NA
LNAV/VNAV DA	980-1¾	515 (600-1¾)		NA
LNAV MDA	1080-1	615 (700-1)	1080-1¾ 615 (700-1¾)	NA

SE-1, 28 NOV 2024 to 26 DEC 2024

SE-1, 28 NOV 2024 to 26 DEC 2024