

| | | |
|--|------------------------|---|
| WAAS CH 77814 W04A | APP CRS 037° | Rwy Idg 5001 TDZE 468 Apt Elev 468 |
|--|------------------------|---|

RNAV (GPS) RWY 4

BENTON COUNTY (ØM4)

RNP APCH.

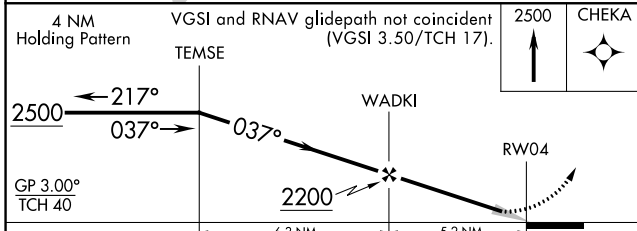
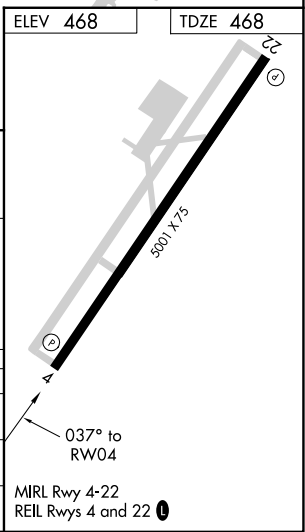
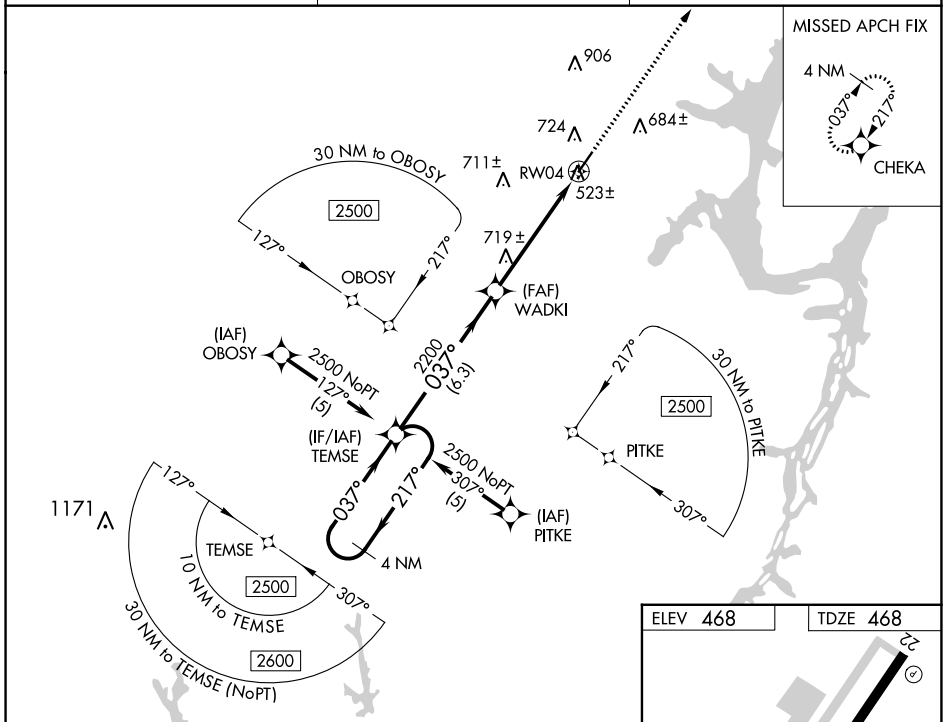
▼ Baro-VNAV NA. Use Beech River Rgnl altimeter setting; when not received use Jackson altimeter setting and increase all DA 58 feet and all MDA 60 feet and increase LPV all Cats visibility ¼ mile, LNAV/VNAV all Cats visibility ¼ mile, and LNAV Cat C visibility ¼ mile.

MISSED APPROACH: Climb to 2500 direct CHEKA and hold.

PVE AWOS-3
118.125

MEMPHIS CENTER
125.85 379.25

UNICOM
122.8 (CTAF) Ø



| CATEGORY | A | B | C | D |
|--------------|---------------------|---|----------------------|----|
| LPV DA | 771-1 303 (400-1) | | | NA |
| LNAV/VNAV DA | 944-1¾ 476 (500-1¾) | | | NA |
| LNAV MDA | 1040-1 572 (600-1) | | 1040-1½ 572 (600-1½) | |

SE-1, 28 NOV 2024 to 26 DEC 2024

SE-1, 28 NOV 2024 to 26 DEC 2024