

WAAS CH <b>90331</b> <b>W23A</b>	APP CRS <b>229°</b>	Rwy Idg TDZE <b>166</b> Apt Elev <b>166</b>	<b>5000</b> <b>166</b> <b>166</b>
--	------------------------	---	---

# RNAV (GPS) RWY 23

MOUNT OLIVE MUNI (W40)

RNP APCH - GPS.

**⚠** Rwy 23 helicopter visibility reduction below  $\frac{3}{4}$  SM NA.  
When local altimeter setting not received, use Goldsboro altimeter setting.

MISSED APPROACH: Climb to 700 then climbing right turn to 2000 direct WIKOG and hold.

AWOS-3P  
**120.075**

SEYMOUR JOHNSON APP CON \*  
**119.7 273.6**

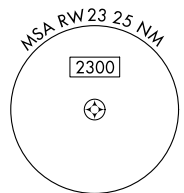
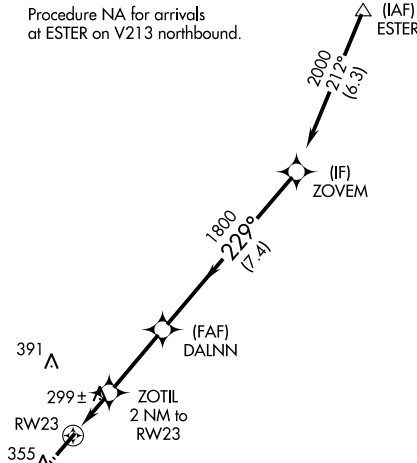
UNICOM  
**122.8 (CTAF) 0**

MISSED APCH FIX

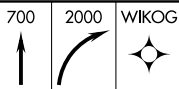
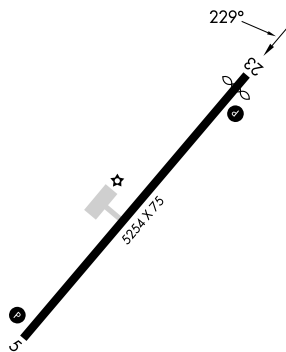


Procedure NA for arrivals at ESTER on V213 northbound.

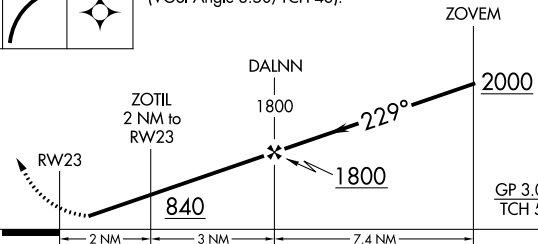
1148  
A



ELEV 166 TDZE 166



VGSI and RNAV glidepath not coincident (VGSI Angle 3.50/TCH 43).



		2 NM	3 NM	7.4 NM	
CATEGORY	A	B	C	D	
LPV DA	452-1	286 (300-1)		NA	
LNAV MDA	580-1	414 (500-1)	580-1 $\frac{1}{8}$ 414 (500-1 $\frac{1}{8}$ )	NA	
CIRCLING	700-1	534 (600-1)	720-1 $\frac{1}{2}$ 554 (600-1 $\frac{1}{2}$ )	NA	

MIRL Rwy 5-23 0