

APP CRS 124°	Rwy Idg 3005
	TDZE 21
	Apt Elev 21

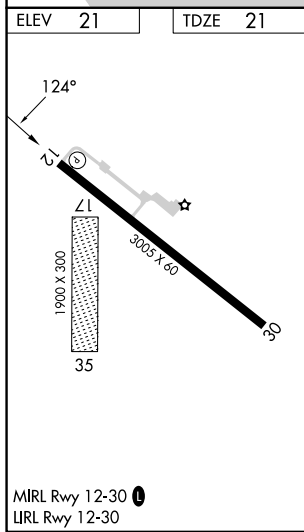
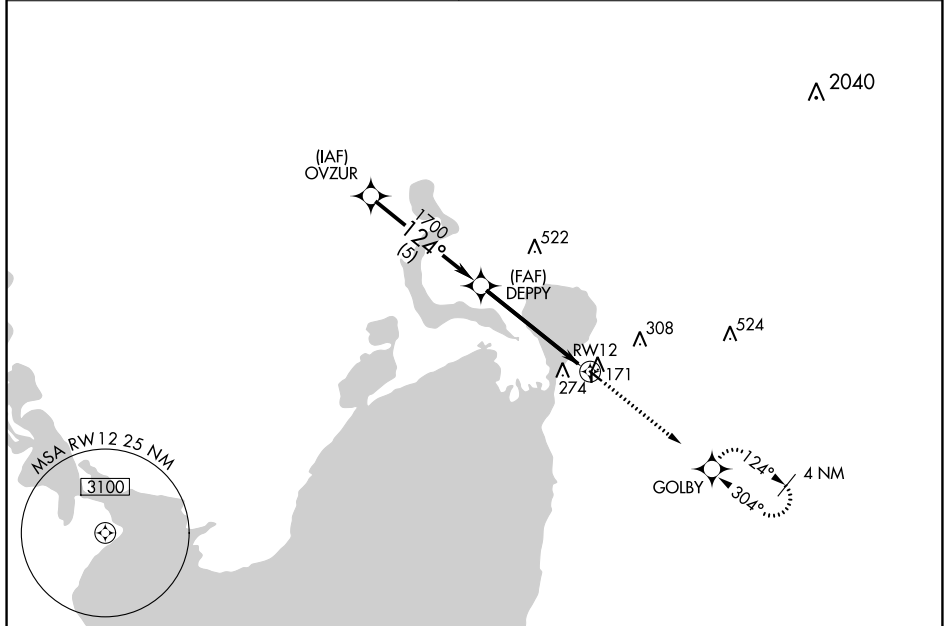
RNAV (GPS) RWY 12

CHAMBERS COUNTY (T00)

▼ RADAR required. Use William P Hobby altimeter setting. GPS or RNP-0.3 required.
▲ NA DME/DME RNP-0.3 NA. Procedure NA at night. Rwy 12 helicopter visibility reduction below 1 SM NA. Circling NA to Rwy 17 and 35.

MISSED APPROACH: Climb to 3000 direct GOLBY WP and hold.

HOUSTON APP CON 134.45 284.0	CTAF 122.9 0
--	------------------------



Procedure Turn NA	OVZUR	DEPPY	RWY 12
	2000	1700	
	124°		
	5 NM	5 NM	
	3.09° TCH 40		
CATEGORY	A	B	C
LNAV MDA	560-1	539 (600-1)	560-1½ 539 (600-1½)
CIRCLING	660-1	639 (700-1)	700-2 679 (700-2)

SC-5, 28 NOV 2024 to 26 DEC 2024

SC-5, 28 NOV 2024 to 26 DEC 2024