

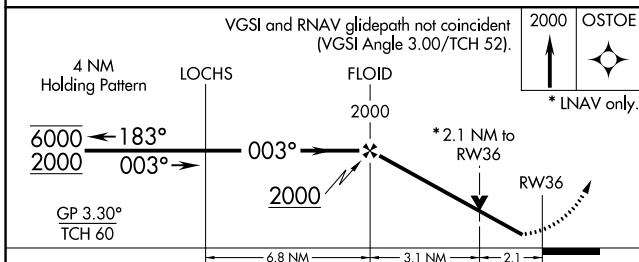
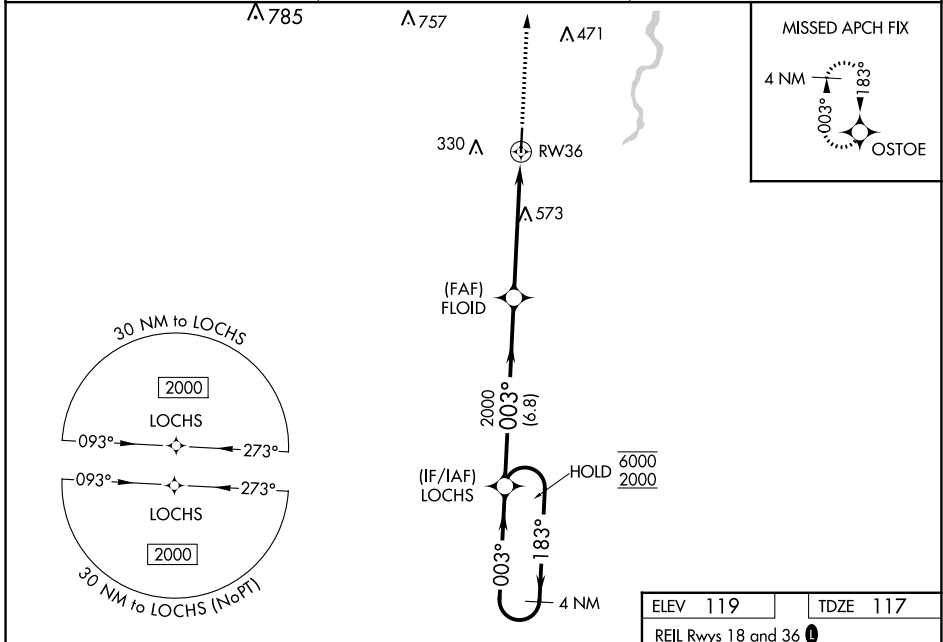
WAAS CH 62913 W36A	APP CRS 003°	Rwy Idg TDZE 117 Apt Elev 119	5002
--	------------------------	---	-------------

RNAV (GPS) RWY 36

GEORGE R CARR MEML AIR FLD (BXA)

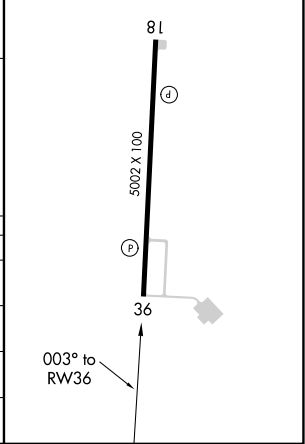
RNP APCH.	MISSED APPROACH: Climb to 2000 direct OSTOE and hold.
<p>▼</p> <p>▲ Rwy 36 helicopter visibility reduction below 3/4 SM NA. For uncompensated Baro-VNAV systems, LNAV/VNAV NA below -15°C or above 54°C.</p>	

AWOS-3PT 118.025	HOUSTON CENTER 126.8 327.8	UNICOM 122.8 (CTAF) 0
----------------------------	--------------------------------------	---------------------------------



ELEV 119	TDZE 117
----------	----------

REIL Rwy 18 and 36 0
MIRL Rwy 18-36 0



CATEGORY	A	B	C	D
LPV DA	421-1	304 (400-1)		NA
LNAV/VNAV DA	512-1 1/8	395 (400-1 1/8)		NA
LNAV MDA	840-1 723 (800-1)		840-2 723 (800-2)	NA
CIRCLING	840-1 721 (800-1)		880-2 1/4 761 (800-2 1/4)	NA

SC-4, 28 NOV 2024 to 26 DEC 2024

SC-4, 28 NOV 2024 to 26 DEC 2024