

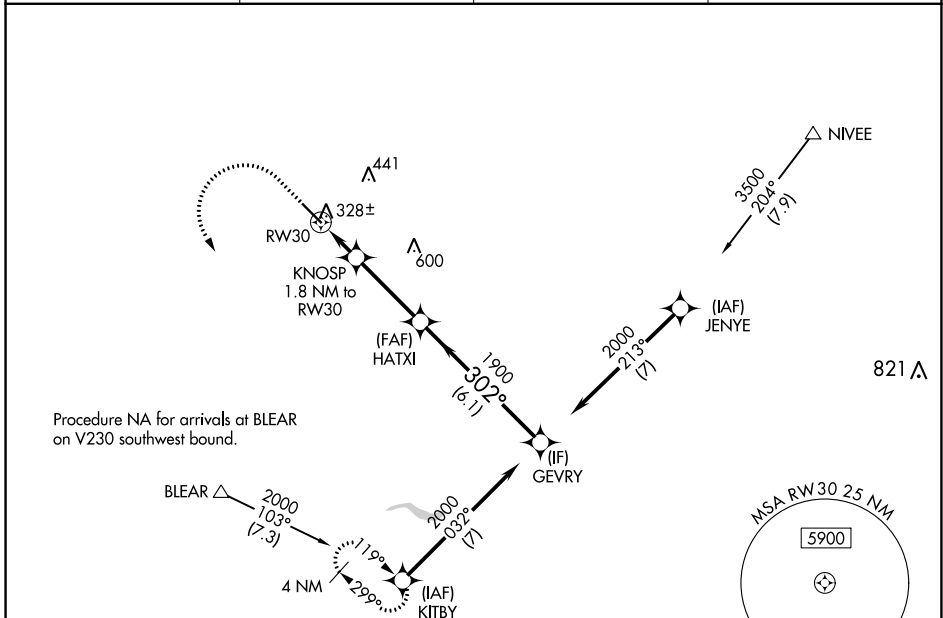
WAAS CH <b>90209</b> <b>W30A</b>	APP CRS <b>302°</b>	Rwy Idg TDZE <b>255</b> Apt Elev <b>255</b>	<b>5545</b> <b>255</b> <b>255</b>
--	------------------------	---	---

# RNAV (GPS) RWY 30

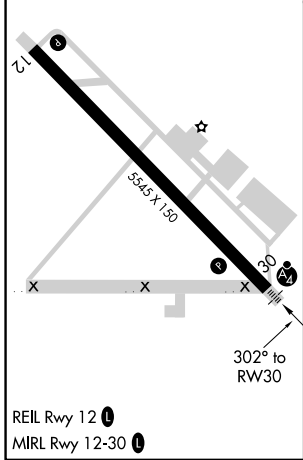
MADERA MUNI (M.A.E.)

RNP APCH - GPS.	MALSF 	MISSED APPROACH: Climb to 800 then climbing left turn to 2000 to KITBY and hold.
For uncompensated Baro-VNAV systems, LNAV/VNAV NA below -2°C or above 54°C. Inop table does not apply to LPV and LNAV/VNAV Cat A/B/C.		

ASOS <b>134.725</b>	FRESNO APP CON <b>119.45</b>	CLNC DEL <b>119.45</b>	UNICOM <b>122.8 (CTAF) 0</b>
------------------------	---------------------------------	---------------------------	---------------------------------



ELEV 255	TDZE 255
----------	----------



800	2000	KITBY	VGSI and RNAV glidepath not coincident (VGSI Angle 3.00/TCH 34).	
			KNOSP 1.8 NM to RW30	GEVRY
		HATXI 1900	302°	2000
		1900	1900	GP 3.00° TCH 35
1.1 NM	0.7 NM	3.3 NM	6.1 NM	
CATEGORY	A	B	C	D
LPV DA	505- <sup>3</sup> / <sub>4</sub>		250 (300- <sup>3</sup> / <sub>4</sub> )	NA
LNAV/VNAV DA	505- <sup>3</sup> / <sub>4</sub>		250 (300- <sup>3</sup> / <sub>4</sub> )	NA
LNAV MDA	640- <sup>3</sup> / <sub>4</sub>	385 (400- <sup>3</sup> / <sub>4</sub> )	640- <sup>7</sup> / <sub>8</sub> 385 (400- <sup>7</sup> / <sub>8</sub> )	NA
CIRCLING	680-1 425 (500-1)	720-1 465 (500-1)	760-1 <sup>1</sup> / <sub>2</sub> 505 (600-1 <sup>1</sup> / <sub>2</sub> )	NA

SW-2, 28 NOV 2024 to 26 DEC 2024

SW-2, 28 NOV 2024 to 26 DEC 2024