

APP CRS **091°**
 Rwy Idg **4504**
 TDZE **451**
 Apt Elev **481**

RNAV (GPS) RWY 9
 CLARKSVILLE MUNI (H35)

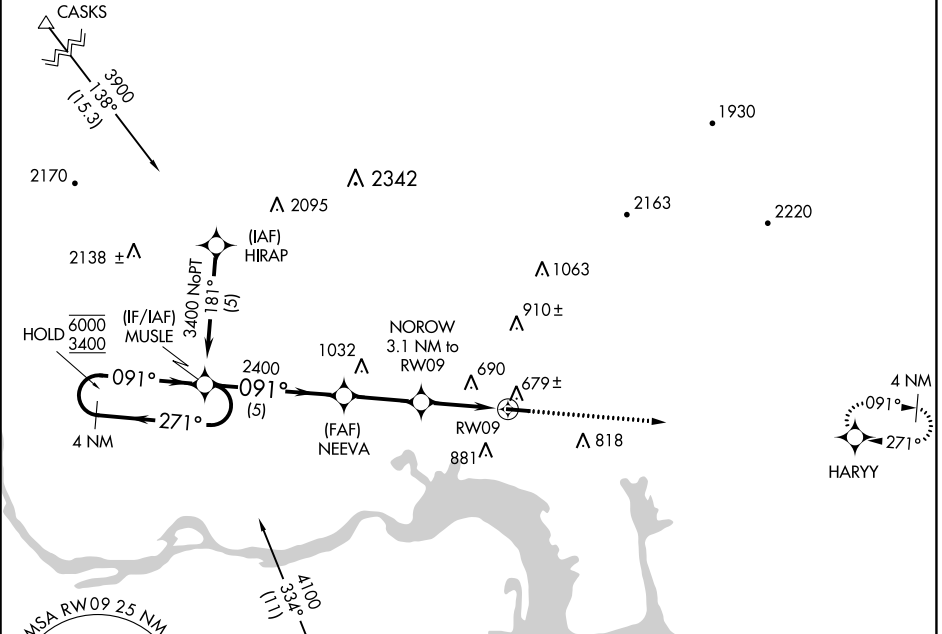
RNP APCH - GPS.

Rwy 9 helicopter visibility reduction below 1 SM NA.

MISSED APPROACH: Climb to 3100 direct HARRY and hold.

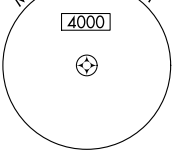
MEMPHIS CENTER
128.475 377.15

UNICOM
122.8 (CTAF)

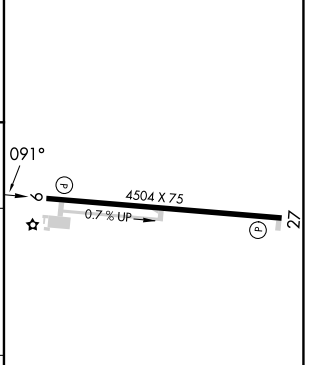
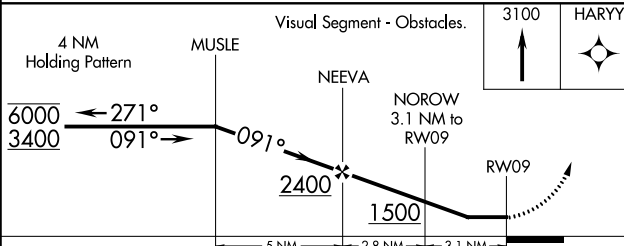


SC-1, 28 NOV 2024 to 26 DEC 2024

SC-1, 28 NOV 2024 to 26 DEC 2024



ELEV **481** TDZE **451**



CATEGORY	A	B	C	D
LNAV MDA	1060-1	609 (600-1)		NA
CIRCLING	1220-1 739 (800-1)	1240-1¼ 759 (800-1¼)		NA

MIRL Rwy 9-27