

APP CRS **323°**  
 Rwy Idg **N/A**  
 TDZE **N/A**  
 Apt Elev **6882**

# RNAV (GPS)-E

STEAMBOAT SPRINGS/BOB ADAMS FLD (SBS)

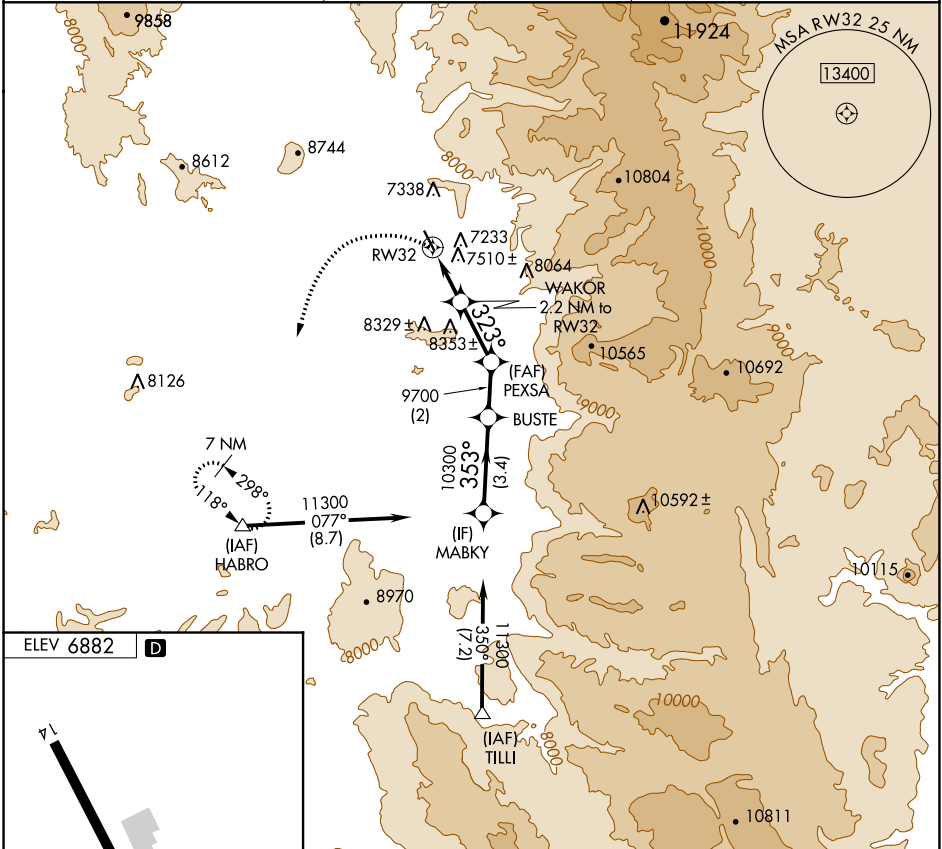
**▽** Circling NA northeast of Rwy 14-32.  
**▲** NA  
**☒** -26°C  
 DME/DME RNP- 0.3 NA.  
 When local altimeter setting not received, use Yampa Valley altimeter setting and increase all MDA 80 feet.

**MISSED APPROACH:** Climbing left turn to 11300 direct HABRO and hold, continue climb-in-hold to 11300.

AWOS-3  
**118.325**

DENVER CENTER  
**120.475 235.975**

UNICOM  
**122.8 (CTAF) 0**

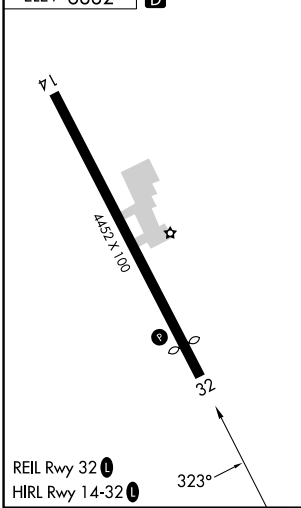


SW-1, 28 NOV 2024 to 26 DEC 2024

SW-1, 28 NOV 2024 to 26 DEC 2024

ELEV 6882

**D**



|                   |                           |  |                   |
|-------------------|---------------------------|--|-------------------|
| 11300             | HABRO                     | VGSI and descent angles not coincident (VGSI Angle 4.00/TCH 40). | MABKY             |
|                   |                           |  | BUSTE             |
|                   | WAKOR<br>2.2 NM to RW32   | PEXSA  | 11300             |
|                   |                           | 9700   | Procedure Turn NA |
|                   | RW32                      | 323°   | 10300             |
|                   |                           | 7.75° TCH 40   |                   |
|                   | 2.2 NM                    | 2.4 NM   | 3.4 NM            |
| CATEGORY          | A                         | B  | C                 |
| <b>C</b> CIRCLING | 8140-1¼<br>1258 (1300-1¼) | 8140-1½<br>1258 (1300-1½)  | NA                |