

WAAS CH <b>72802</b> <b>W26A</b>	APP CRS <b>259°</b>	Rwy Idg TDZE Apt Elev	<b>5252</b> <b>2519</b> <b>2558</b>
--	------------------------	-----------------------------	---

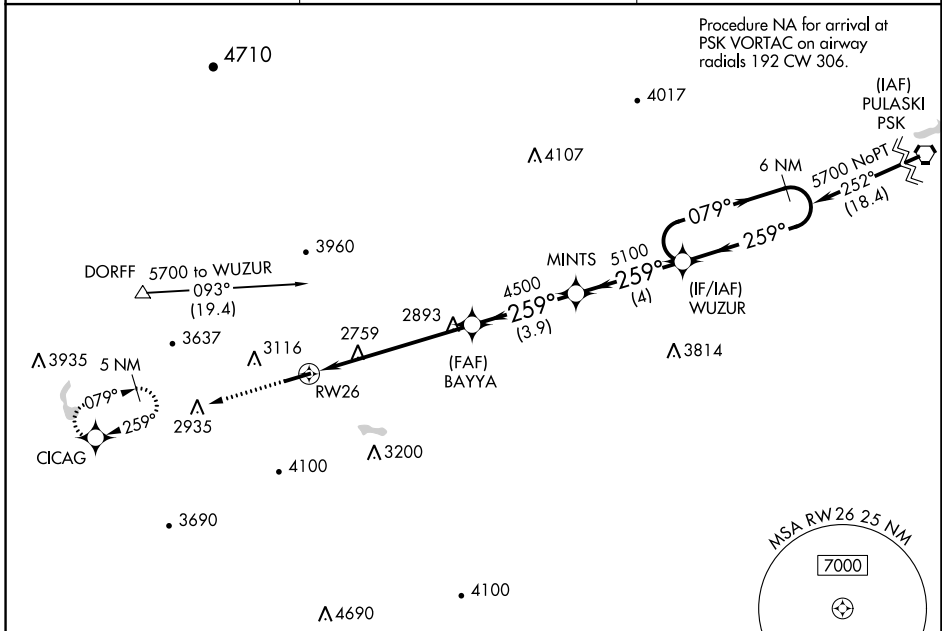
# RNAV (GPS) RWY 26

MOUNTAIN EMPIRE (MKJ)

**⚠** For uncompensated Baro-VNAV systems, LNAV/VNAV NA below -20°C (-4°F) or above 54°C (130°F). Circling NA north of Rwy 8-26. Rwy 26 helicopter visibility reduction below 3/4 SM NA. DME/DME RNP-0.3 NA.

**MISSED APPROACH:** Climb to 6200 direct C1CAG and hold, continue climb-in-hold to 6200.

AWOS-3 <b>123.875</b>	ATLANTA CENTER <b>127.85 269.3</b>	UNICOM <b>122.7 (CTAF) 0</b>
--------------------------	---------------------------------------	---------------------------------

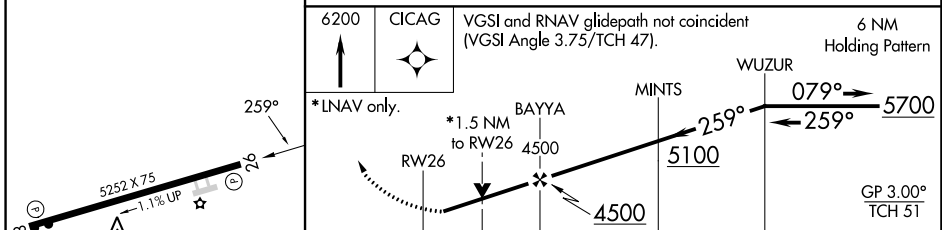


NE-3, 28 NOV 2024 to 26 DEC 2024

NE-3, 28 NOV 2024 to 26 DEC 2024

ELEV 2558	TDZE 2519
-----------	-----------

6200 C1CAG VGSI and RNAV glidepath not coincident (VGSI Angle 3.75/TCH 47). 6 NM Holding Pattern



CATEGORY	A	B	C	D
LPV DA	3096-2		577 (600-2)	NA
LNAV/VNAV DA	3159-2½		640 (700-2½)	NA
LNAV MDA	3140-1	621 (600-1)	3140-1¾ 621 (600-1¾)	NA
<b>C</b> CIRCLING	3260-1	702 (800-1)	4440-3 1882 (1900-3)	NA