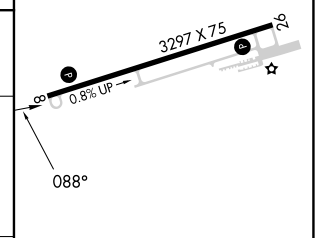
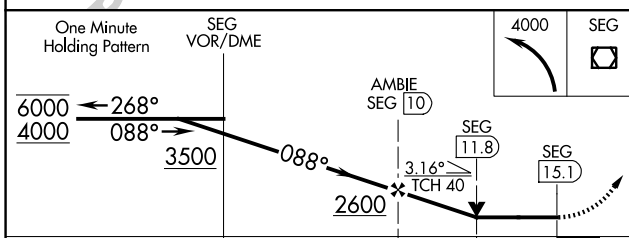
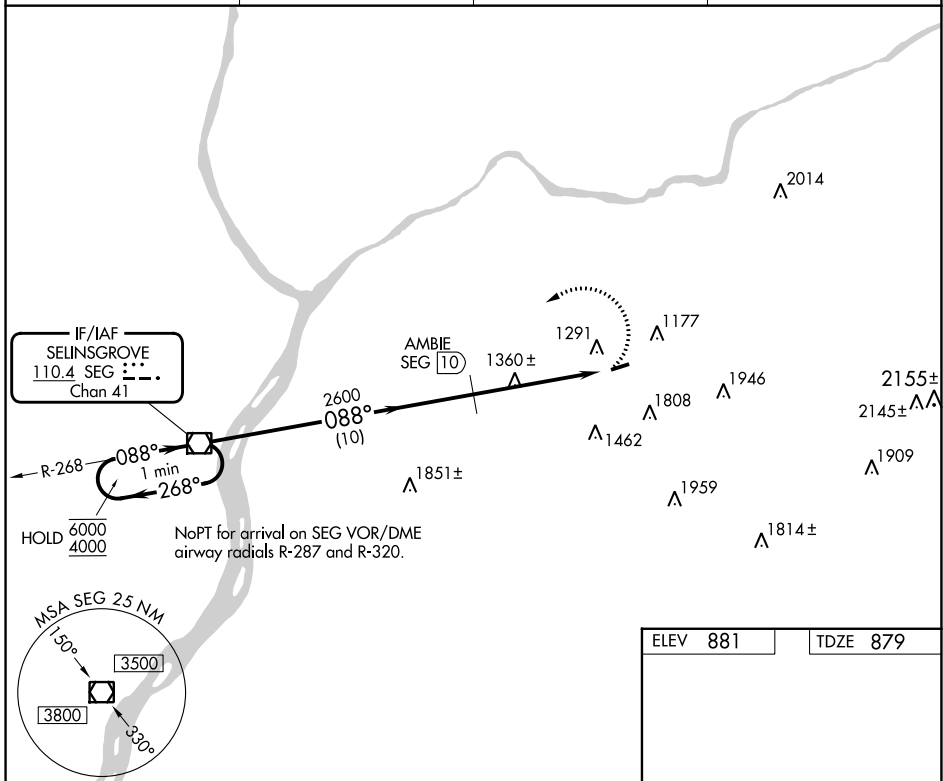


VOR/DME SEG 110.4 Chan 41	APP CRS 088°	Rwy Idg TDZE 3297 879	Apt Elev 881
-----------------------------------------------	------------------------	-------------------------------------------	------------------------

VOR RWY 8
NORTHUMBERLAND COUNTY (N79)

DME required.	MISSED APPROACH: Climbing left turn to 4000 direct SEG VOR/DME and hold.
▽ Rwy 8 helicopter visibility reduction below ¼ SM NA. ▲ NA When local altimeter setting not received, use Selinsgrove altimeter setting and increase all MDAs 100 feet.	

AWOS-3 119.175	HARRISBURG APP CON 118.25 269.45	UNICOM 122.8 (CTAF)	121.8 0
--------------------------	--------------------------------------------	-------------------------------	-----------------------



CATEGORY	A	B	C	D	MRL Rwy 8-26 0 REIL Rws 8 and 26 FAF to MAP 5.1 NM	
S-8	1960-1¼ 1081 (1100-1¼)	1960-1½ 1081 (1100-1½)	1960-3 1081 (1100-3)	NA		
CIRCLING	1960-1¼ 1079 (1100-1¼)	1960-1½ 1079 (1100-1½)	2120-3 1239 (1300-3)	NA		
	Knots	60	90	120	150	180
	Min:Sec	5:06	3:24	2:33	2:02	1:42

NE-4, 28 NOV 2024 to 26 DEC 2024

NE-4, 28 NOV 2024 to 26 DEC 2024