

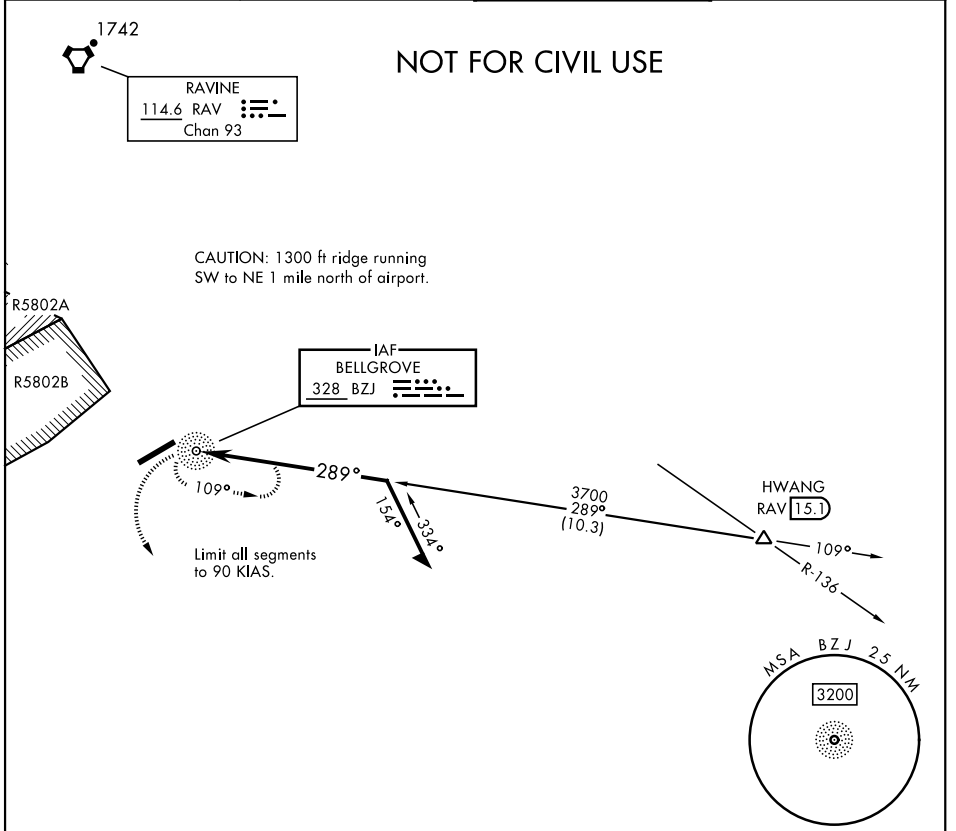
COPTER NDB Y-289°

NDB BZJ 328	APCH CRS 289°	Rwy Idg TDZE Arprt Elev	N/A N/A 487	AL-6422 [USA]	MUIR AHP (KMUI)
-----------------------	-------------------------	----------------------------	--	---------------	-----------------

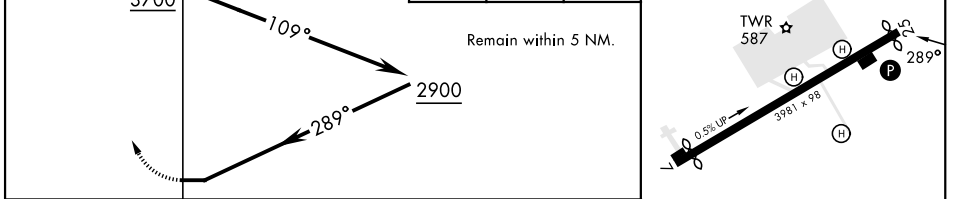
▼ When local altimeter setting not received, use Harrisburg Intl altimeter setting.

MISSED APPROACH: Climb to 2000 via heading 160° then climbing left turn to 2900 direct BZJ NDB and hold. Continue climb in hold.

ASOS 124.175	HARRISBURG APP CON 118.25 269.45	TOWER ★ 126.2 (CTAF) 0 290.325	GND CON 135.675 269.525
------------------------	--	--	-----------------------------------



2000 hdg 160°	2900	BZJ	ELEV 487	Rwy 7 Idg 3631' Rwy 25 Idg 3860'
------------------	------	-----	----------	-------------------------------------



CATEGORY	COPTER			MIRL Rwy 7-25 REIL all rwys
H-289°	1480-1¼	993	(1000-1¼)	

COPTER NDB Y-289°

NE-4, 28 NOV 2024 to 26 DEC 2024

NE-4, 28 NOV 2024 to 26 DEC 2024