

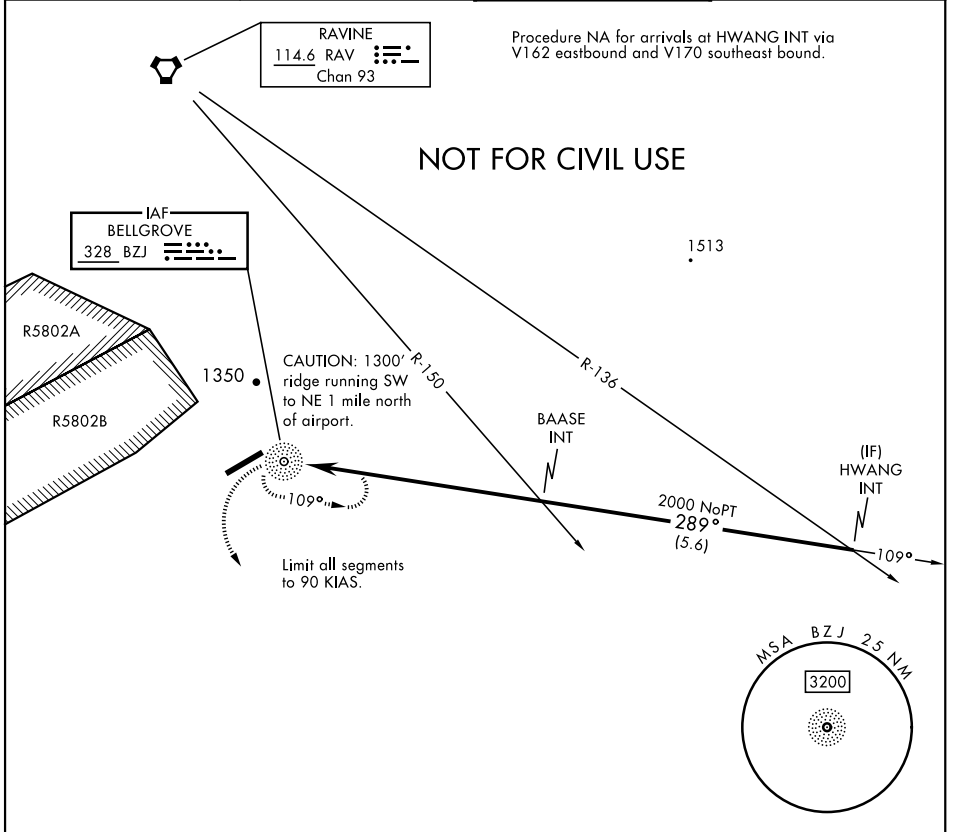
COPTER NDB Z-289°

NDB BZJ 328	APCH CRS 289°	Rwy ldg TDZE Arprt Elev N/A N/A 487	AL-6422 [USA]	MUIR AHP (KMUI)
-----------------------	-------------------------	--	---------------	-----------------

▼ VOR receiver required for this approach.
When local altimeter setting not received, use Harrisburg Intl altimeter and increase MDA by 80 ft, vis by ¼ mile, and ceiling by 100 ft.

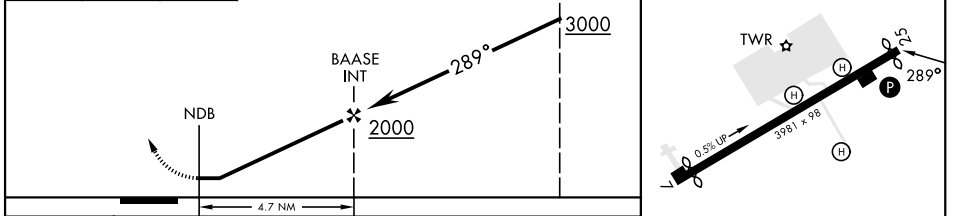
MISSED APPROACH: Climb to 2000 via hdg 160° then climbing left turn to 2900 direct BZJ NDB and hold. Continue climb in hold.

ASOS 124.175	HARRISBURG APP CON 118.25 269.45	MUIR TOWER ★ 126.2 (CTAF) 0 290.325	GND CON 135.675 269.525
------------------------	--	---	-----------------------------------



2000 hdg 160°	2900	BZJ	ELEV 487
------------------	------	-----	----------

Rwy 7 ldg 3631'
Rwy 25 ldg 3860'



CATEGORY	COPTER			MIRL Rwy 7-25
H-289°	1360-1	873	(900-1)	REIL all rwys

COPTER NDB Z-289°

NE-4, 28 NOV 2024 to 26 DEC 2024

NE-4, 28 NOV 2024 to 26 DEC 2024