

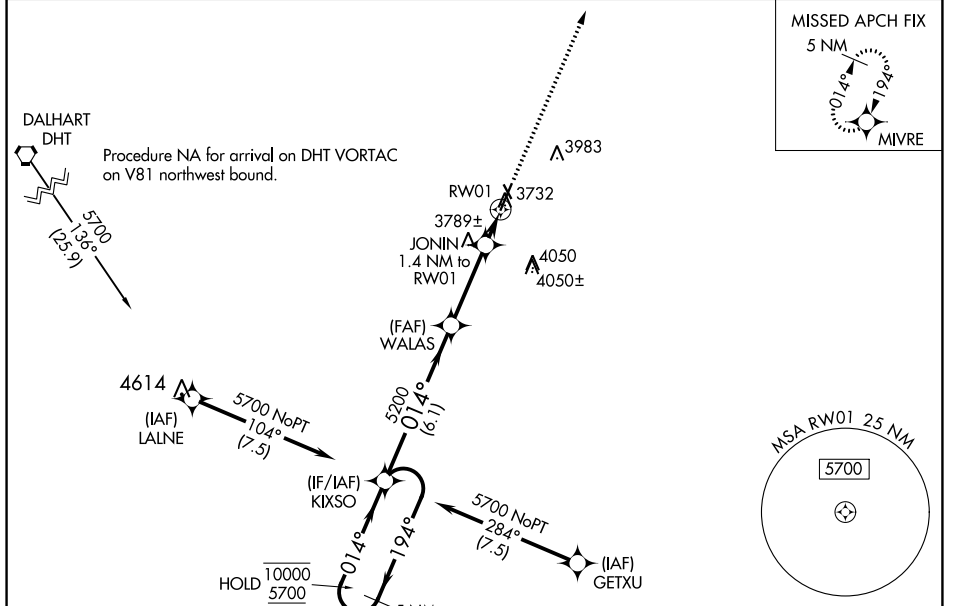
APP CRS	Rwy Idg	<b>6001</b>
<b>014°</b>	TDZE	<b>3706</b>
	Apt Elev	<b>3706</b>

# RNAV (GPS) RWY 1

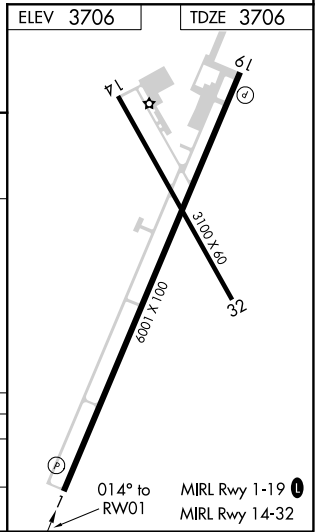
MOORE COUNTY (DUX)

RNP APCH - GPS.		MISSED APPROACH: Climb to 5700 direct MIVRE and hold.
<p>Circling Rwy 14, 32 NA at night.</p>		

AWOS-3 <b>118.075</b>	ALBUQUERQUE CENTER <b>127.85 285.475</b>	UNICOM <b>122.8 (CTAF) 0</b>
--------------------------	---	---------------------------------



5 NM Holding Pattern		KIXSO		WALAS		JONIN 1.4 NM to RW01		RW01	
10000	← 194°	→ 014°	014°	5200	4200	3.00°	TCH 50	0.9 NM to RW01	5700 MIVRE
5700									
CATEGORY		A	B	C	D				
LNAV MDA		4040-1				334 (400-1)			
CIRCLING		4100-1 394 (400-1)	4300-1 594 (600-1)	4400-2 694 (700-2)	4400-2¼ 694 (700-2¼)				



SC-2, 28 NOV 2024 to 26 DEC 2024

SC-2, 28 NOV 2024 to 26 DEC 2024