

APP CRS	Rwy Idg	<b>7200</b>
<b>090°</b>	TDZE	<b>177</b>
	Apt Elev	<b>177</b>

# RNAV (GPS) RWY 9

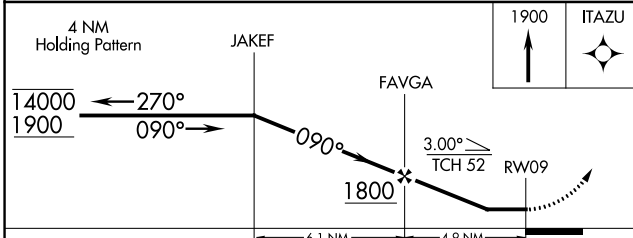
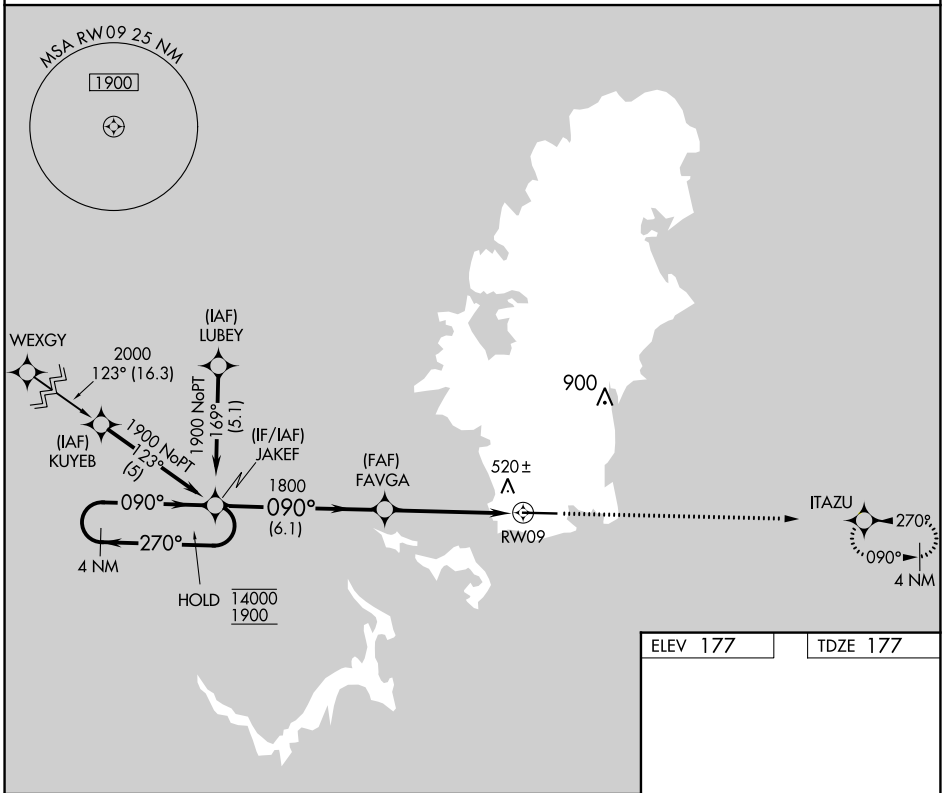
PALAU INTL (ROR)(PTRO)

RNP APCH-GPS.

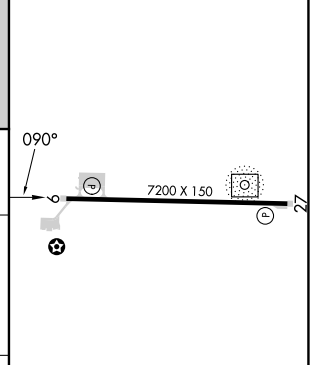
**▼** Circling NA north of Rwy 9-27.  
**▲** Rwy 9 helicopter visibility reduction below 3/4 SM NA.  
 Obtain local altimeter setting on CTAF; when not received, procedure NA. No controlled airspace below 5500.

MISSED APPROACH: Climb to 1900 direct ITAZU and hold.

KOROR RADIO  
**123.6 (CTAF)** **0**



ELEV 177	TDZE 177
----------	----------



CATEGORY	A	B	C	D
LNAV MDA	660-1	483 (500-1)	660-1 3/8	483 (500-1 3/8)
<b>C</b> CIRCLING	700-1 523 (600-1)	760-1 583 (600-1)	780-1 3/4 603 (700-1 3/4)	780-2 603 (700-2)

MIRL Rwy 9-27 **0**  
 REIL Rwys 9 and 27

PAC, 31 OCT 2024 to 26 DEC 2024

PAC, 31 OCT 2024 to 26 DEC 2024