

APP CRS <b>286°</b>	Rwy Idg <b>4001</b>
	TDZE <b>683</b>
	Apt Elev <b>683</b>

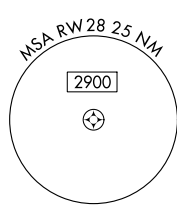
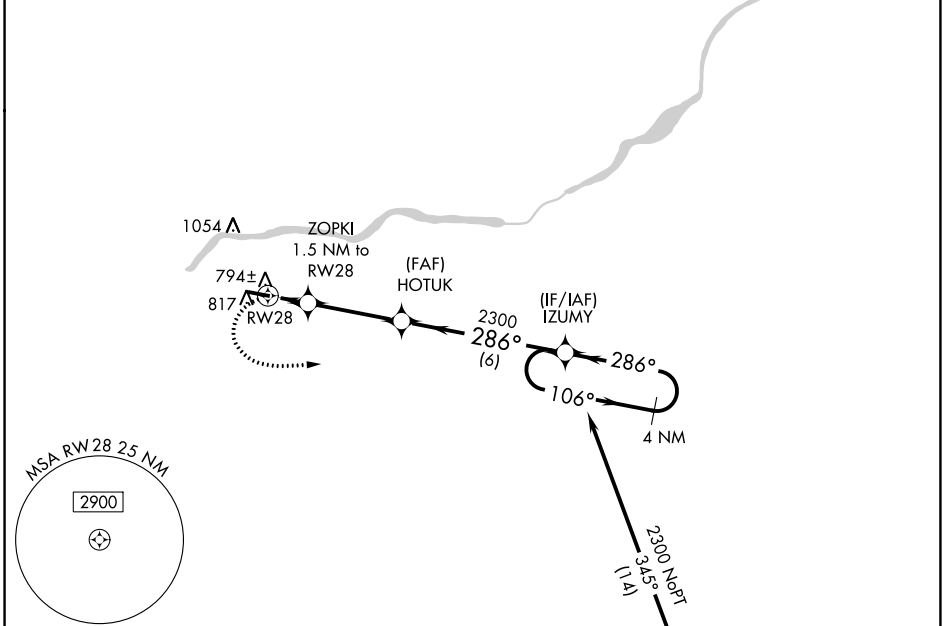
# RNAV (GPS) RWY 28

HENRY COUNTY (7W5)

RNP APCH.  
 ▼ Rwy 28 helicopter visibility reduction below 3/4 SM NA.  
 ▲ NA Circling Rwy 10 NA at night. Use Toledo Express altimeter setting. When not received, procedure NA.

MISSED APPROACH: Climbing left turn to 2300 direct IZUMY and hold.

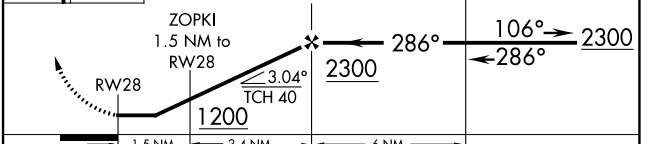
TOL ASOS <b>118.75 290.225</b>	TOLEDO APP CON <b>134.35 307.0</b>	UNICOM <b>123.0 (CTAF) 0</b>
-----------------------------------	---------------------------------------	---------------------------------



ELEV 683	TDZE 683
----------	----------



2300 IZUMY VGSI and descent angles not coincident (VGSI Angle 3.00/TCH 25). 4 NM Holding Pattern



CATEGORY	A	B	C	D
LNAV MDA	1100-1	417 (500-1)	1100-1½ 417 (500-1½)	NA
<input checked="" type="checkbox"/> CIRCLING	1220-1	537 (600-1)	1400-2 717 (800-2)	NA

EC-2, 28 NOV 2024 to 26 DEC 2024

EC-2, 28 NOV 2024 to 26 DEC 2024