

APP CRS	Rwy Idg	4504
152°	TDZE	268
	Apt Elev	269

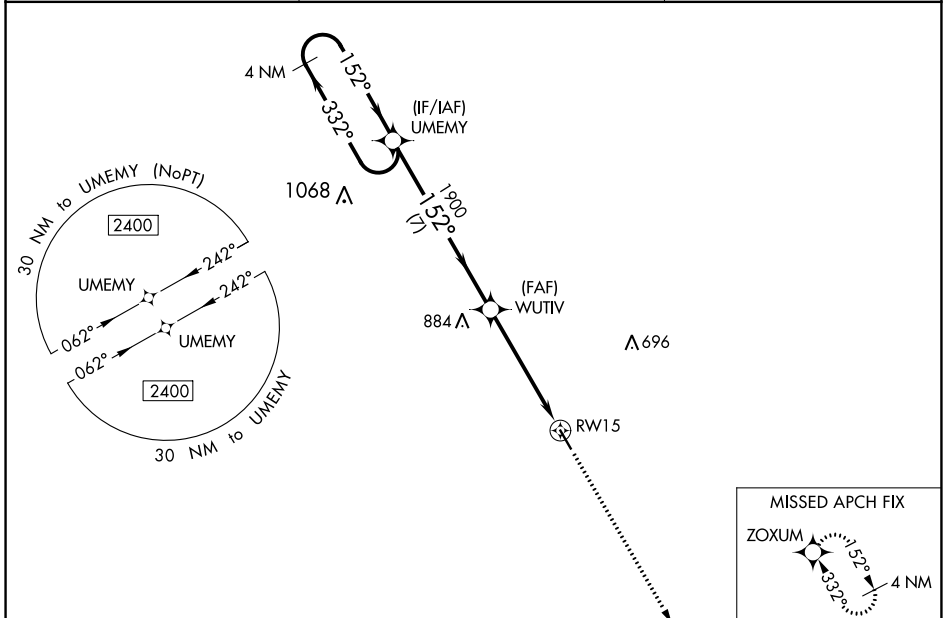
RNAV (GPS) RWY 15

GIDEON MEML (M85)

▽ DME/DME RNP-0.3 NA. Procedure NA at night. Helicopter visibility reduction below 1 SM NA. Obtain Arkansas Intl altimeter setting on CTAF (122.7), when not received, use Poplar Bluff Muni altimeter setting and increase all MDA 20 feet and Circling Cat C visibility 1/8 mile.

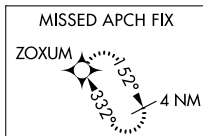
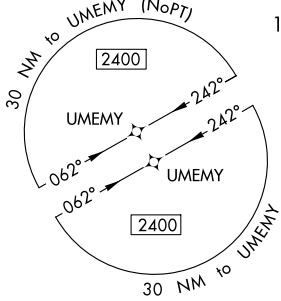
MISSED APPROACH: Climb to 2400 direct ZOXUM and hold.

BYH CTAF 122.7	MEMPHIS CENTER 133.65 292.15	CTAF 122.9
--------------------------	--	----------------------

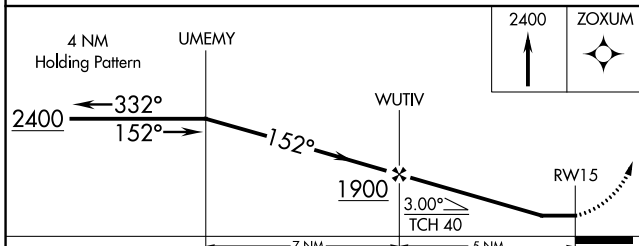
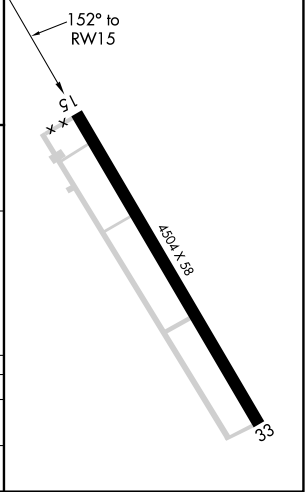


NC-3, 28 NOV 2024 to 26 DEC 2024

NC-3, 28 NOV 2024 to 26 DEC 2024



ELEV 269	TDZE 268
----------	----------



CATEGORY	A	B	C	D
RNAV MDA	820-1	552 (600-1)	820-1 5/8 552 (600-1 5/8)	NA
CIRCLING	860-1	591 (600-1)	900-1 3/4 631 (700-1 3/4)	NA