

WAAS CH <b>69228</b> <b>W36A</b>	APP CRS <b>005°</b>	Rwy Idg TDZE Apt Elev	<b>5000</b> <b>541</b> <b>545</b>
--	------------------------	-----------------------------	---

# RNAV (GPS) RWY 36

MEXIA-LIMESTONE COUNTY (L.X.Y)

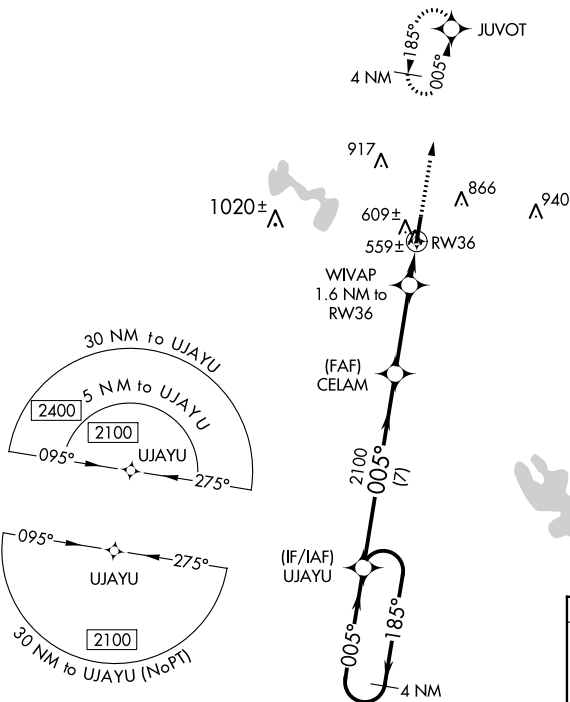
**▽** DME/DME RNP-0.3 NA. Helicopter visibility reduction below 3/4 SM NA. Obtain local altimeter setting on CTAF; when not received, use Waco Rgnl altimeter setting and increase all MDA 100 feet; increase LP Cat C visibility 1/8 mile and LNAV and circling Cat C visibility 1/4 mile.

**MISSED APPROACH:**  
Climb to 2400 direct JUVOT and hold.

AWOS-3  
**127.275**

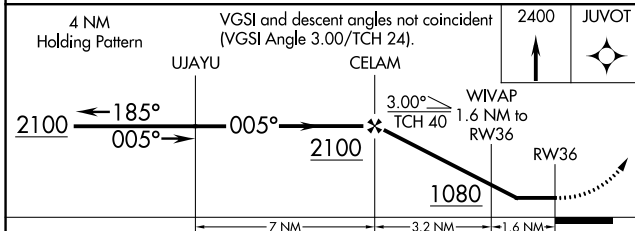
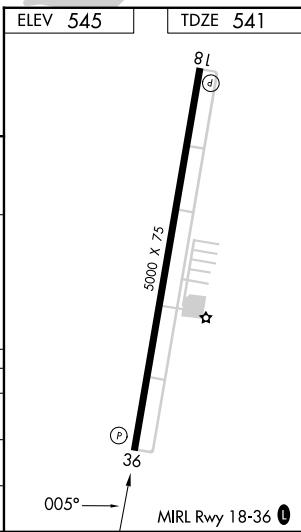
WACO APP CON ★  
**127.65 352.0**

UNICOM  
**122.8 (CTAF)**



SC-5, 28 NOV 2024 to 26 DEC 2024

SC-5, 28 NOV 2024 to 26 DEC 2024



CATEGORY	A	B	C	D
LP MDA	860-1	319 (400-1)		NA
LNAV MDA	880-1	339 (400-1)		NA
CIRCLING	960-1 415 (500-1)	1180-1 635 (700-1)	1220-2 675 (700-2)	NA