

APP CRS	Rwy Idg	<b>N/A</b>
<b>287°</b>	TDZE	<b>N/A</b>
	Apt Elev	<b>304</b>

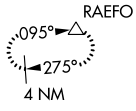
# RNAV (GPS)-A

P K AIRPARK (5W4)

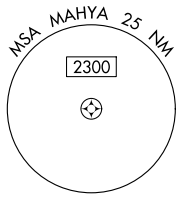
<p>NA</p>	<p>DME/DME RNP-0.3 NA. Procedure NA at night. Use Fayetteville altimeter setting.</p>	<p>MISSED APPROACH: Climbing left turn to 3000 direct RAEFO and hold.</p>
<p>FAYETTEVILLE APP CON <b>127.8 290.25</b></p>		<p>UNICOM <b>123.0 (CTAF)</b></p>

SE-2, 28 NOV 2024 to 26 DEC 2024

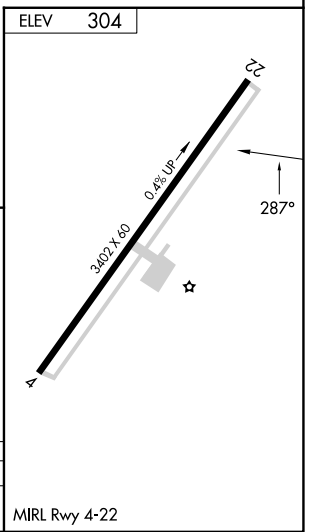
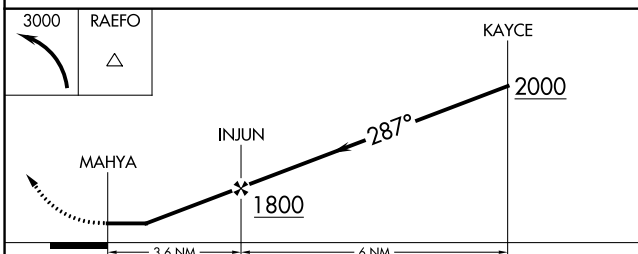
SE-2, 28 NOV 2024 to 26 DEC 2024



Procedure NA for arrival on FAY VOR/DME airway radials 225 CW 009.



1249 A



CATEGORY	A	B	C	D
CIRCLING	840-1 536 (600-1)	860-1 556 (600-1)	920-1 <sup>3</sup> / <sub>4</sub> 616 (700-1 <sup>3</sup> / <sub>4</sub> )	NA

MIRL Rwy 4-22