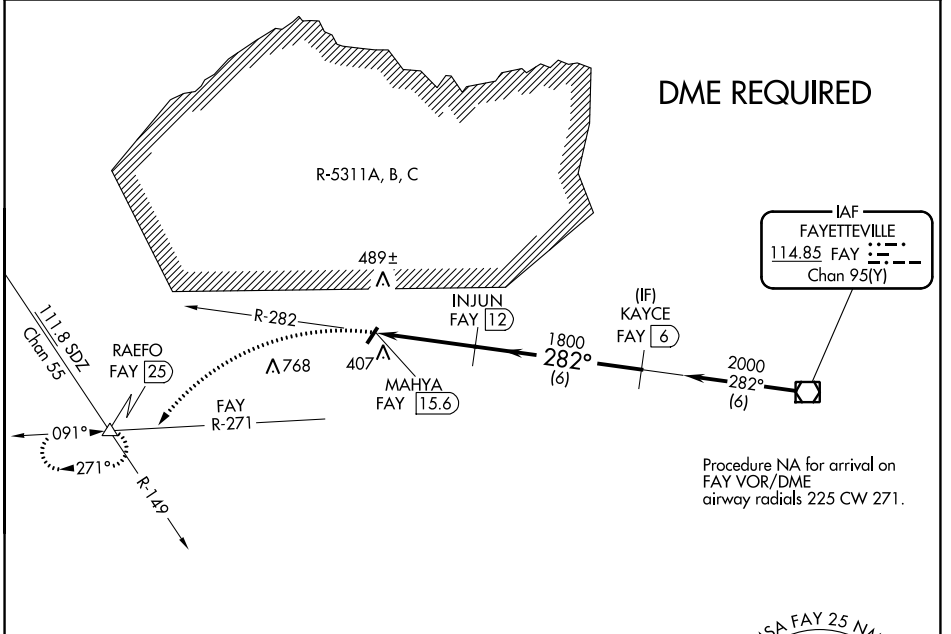


VOR/DME <b>FAY</b> <b>114.85</b> Chan <b>95(Y)</b>	APP CRS <b>282°</b>	Rwy Idg TDZE Apt Elev <b>N/A</b> <b>N/A</b> <b>304</b>
--	------------------------	---

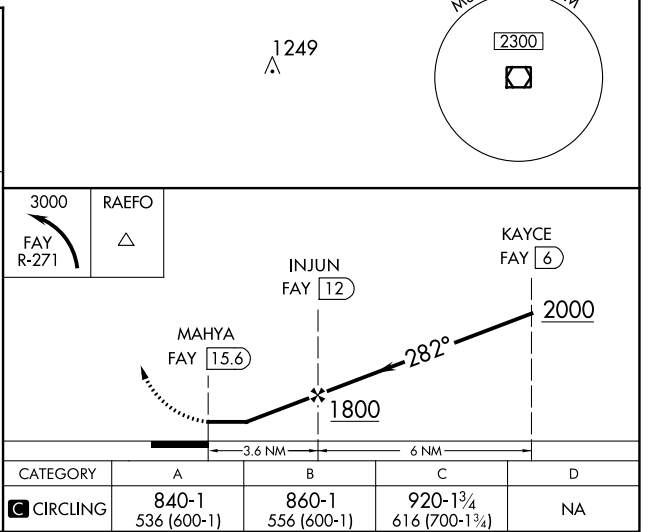
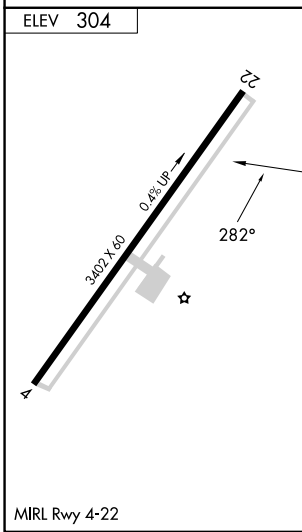
**VOR-A**  
P K AIRPARK (5W4)

<p><b>▼</b> DME required. Procedure NA at night. <b>▲</b> NA Use Fayetteville altimeter setting.</p>	<p>MISSED APPROACH: Climbing left turn to 3000 on FAY VOR/DME R-271 to RAEFO/FAY 25 DME and hold.</p>
<p>FAYETTEVILLE APP CON <b>127.8 290.25</b></p>	<p>UNICOM <b>123.0 (CTAF)</b></p>



SE-2, 28 NOV 2024 to 26 DEC 2024

SE-2, 28 NOV 2024 to 26 DEC 2024



CATEGORY	A	B	C	D
<b>☑</b> CIRCLING	840-1 536 (600-1)	860-1 556 (600-1)	920-1 <sup>3</sup> / <sub>4</sub> 616 (700-1 <sup>3</sup> / <sub>4</sub> )	NA