

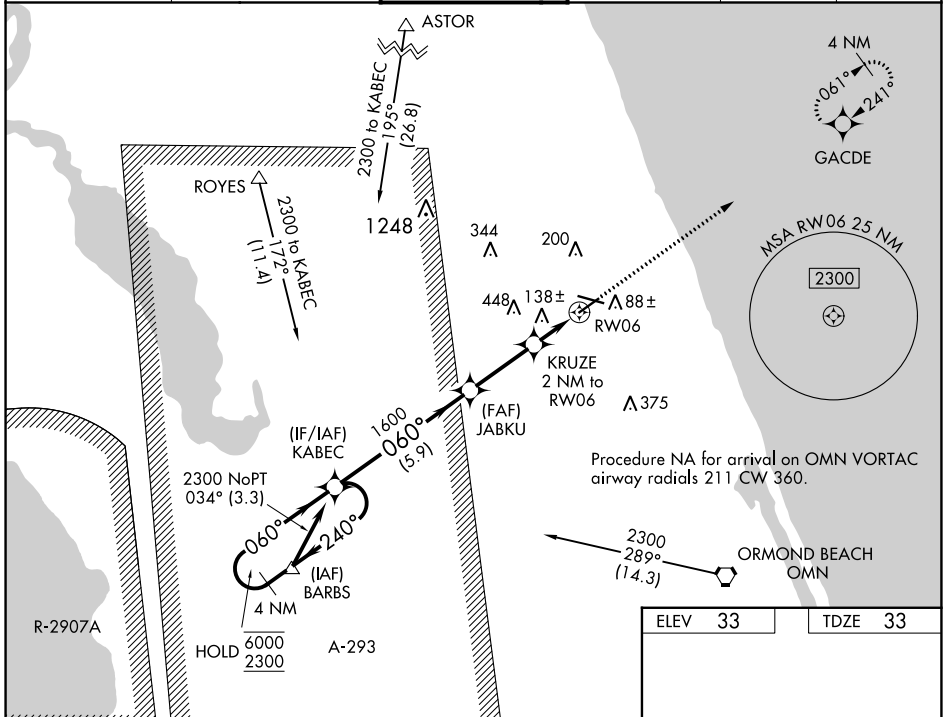
WAAS CH 49209 W06A	APP CRS 060°	Rwy Idg TDZE Apt Elev	5001 33 33
----------------------------------------	------------------------	-----------------------------	---------------------------------------

RNAV (GPS) RWY 6

FLAGLER EXEC (FIN)

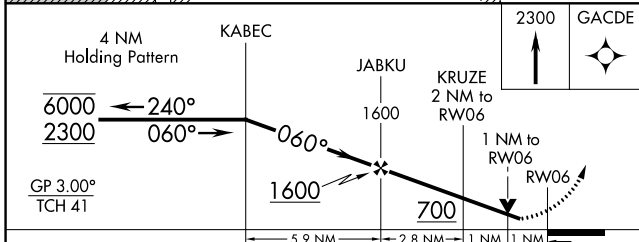
RNP APCH-GPS.		MISSED APPROACH: Climb to 2300 direct GACDE and hold.			
<p>▽ Circling NA to Rwys 18W and 36W. Circling Rwy 11, 29 NA at night. ▲ Rwy 6 helicopter visibility reduction below ¼ SM NA. For uncompensated Baro-VNAV systems, LNAV/VNAV NA below -15°C or above 54°C.</p>					

ATIS 128.325	DAYTONA APP CON 125.8 269.075	FLAGLER TOWER ★ 118.95 (CTAF) 0	GND CON 121.75	CLNC DEL 121.75	UNICOM 123.0
------------------------	-----------------------------------------	-------------------------------------------	--------------------------	---------------------------	------------------------



SE-3, 28 NOV 2024 to 26 DEC 2024

SE-3, 28 NOV 2024 to 26 DEC 2024



ELEV 33	TDZE 33
---------	---------

CATEGORY	A	B	C	D
LPV DA		312-7/8	279 (300-7/8)	
LNAV/VNAV DA		292-3/4	259 (300-3/4)	
LNAV MDA		400-1	367 (400-1)	
CIRCLING	500-1 467 (500-1)	760-2 727 (800-2)	760-2 727 (800-2)	760-2 727 (800-2)

