

WAAS CH <b>97332</b> <b>W17A</b>	APP CRS <b>175°</b>	Rwy Idg TDZE Apt Elev	<b>5101</b> <b>1275</b> <b>1275</b>
--	------------------------	-----------------------------	---

# RNAV (GPS) RWY 17

OLNEY MUNI (ONY)

RNP APCH - GPS.

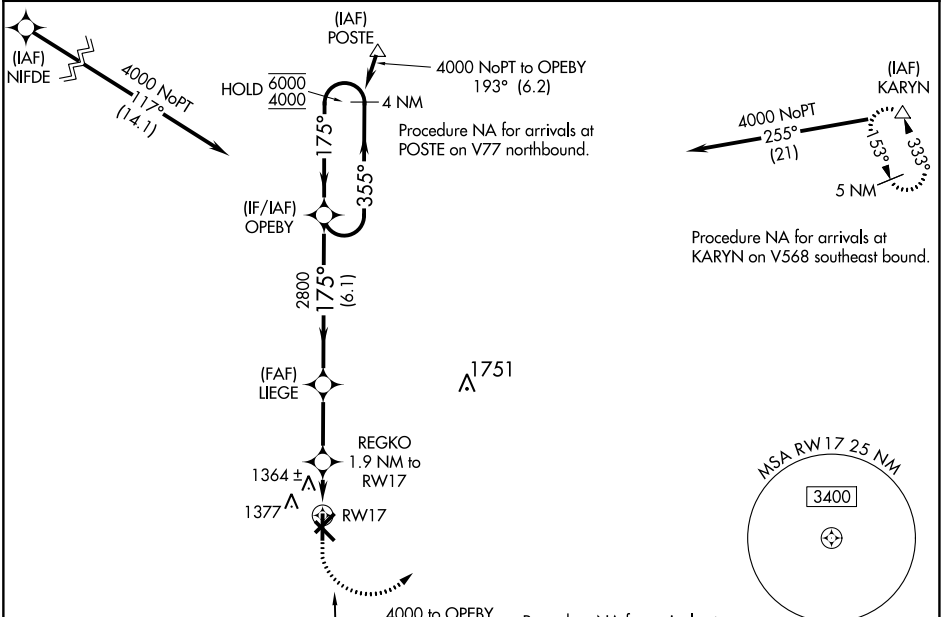
**NA** Rwy 17 helicopter visibility reduction below 3/4 SM NA. Baro-VNAV NA. Use Graham altimeter setting.

MISSED APPROACH: Climb to 1800 then climbing left turn to 5000 direct KARYN and hold.

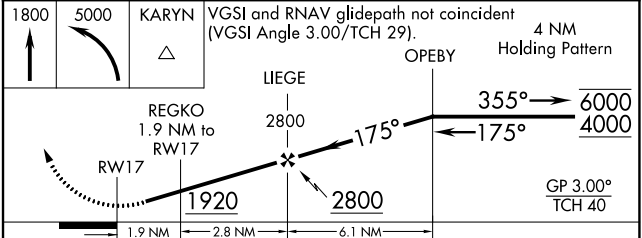
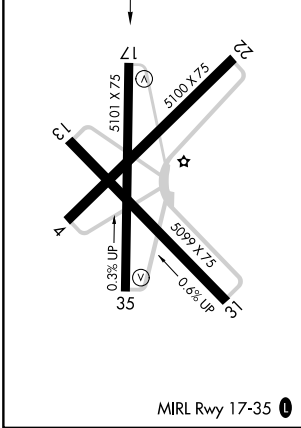
RPH AWOS-3P  
**118.025**

FORT WORTH CENTER  
**133.5 350.35**

UNICOM  
**122.8 (CTAF)**



ELEV 1275	TDZE 1275
-----------	-----------



CATEGORY	A	B	C	D
LPV DA	1592-7/8	317 (400-7/8)		NA
LNAV/ VNAV DA	1592-7/8	317 (400-7/8)		NA
LNAV MDA	1700-1	425 (500-1)	1700-1 1/4 425 (500-1 1/4)	NA
<input checked="" type="checkbox"/> CIRCLING	1760-1	485 (500-1)	1760-1 1/2 485 (500-1 1/2)	NA

SC-2, 28 NOV 2024 to 26 DEC 2024

SC-2, 28 NOV 2024 to 26 DEC 2024