

LOC I-MQJ <b>108.7</b>	APP CRS <b>252°</b>	Rwy Idg TDZE Apt Elev	<b>6005</b> <b>860</b> <b>862</b>
---------------------------	------------------------	-----------------------------	---

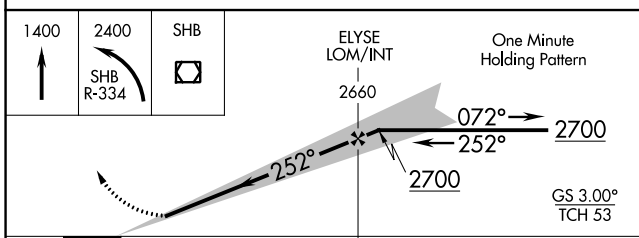
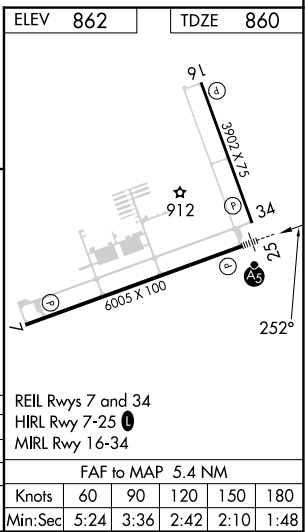
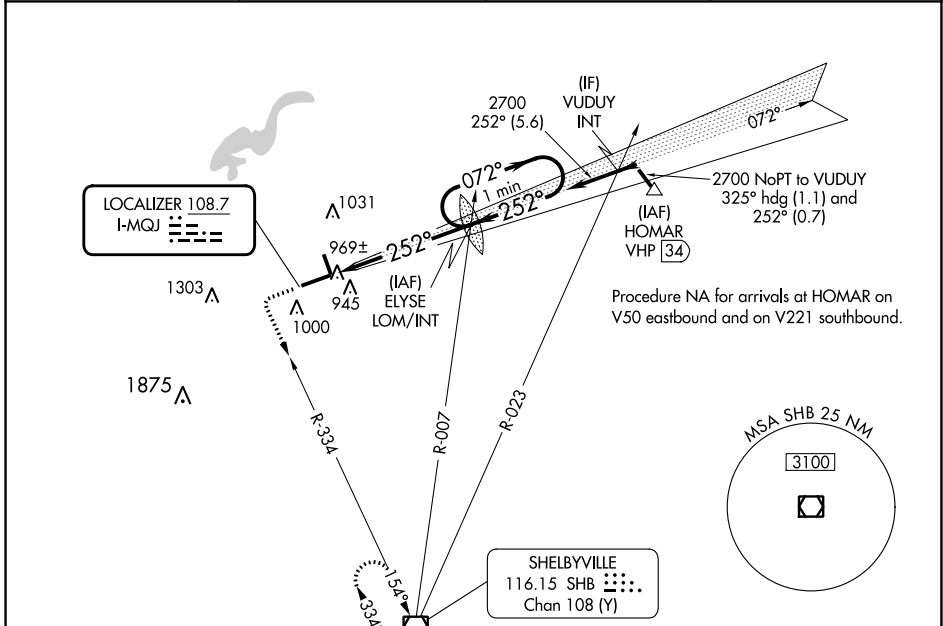
# ILS or LOC RWY 25

INDIANAPOLIS RGNL (MQJ)

**▽** When local altimeter setting not received, use Indianapolis Intl altimeter setting and increase all DA 55 feet and all MDA 60 feet, increase S-LOC 25 Cats C/D visibility 1/2 mile and Circling Cat D visibility 1/4 mile.

**MALSRS**  
**AS**  
MISSED APPROACH: Climb to 1400 then climbing left turn to 2400 on SHB VOR/DME R-334 to SHB VOR/DME and hold.

AWOS-3PT <b>124.175</b>	INDIANAPOLIS APP CON <b>127.15 317.8</b>	CLNC DEL <b>119.25</b>	UNICOM <b>122.975 (CTAF)</b>
----------------------------	---	---------------------------	---------------------------------



CATEGORY	A	B	C	D
S-ILS 25	1060-1/2 200 (200-1/2)			
S-LOC 25	1220-1/2	360 (400-1/2)	1220-5/8	360 (400-5/8)
<b>CIRCLING</b>	1340-1	478 (500-1)	1360-1 1/2	1660-2 1/2
			498 (500-1 1/2)	798 (800-2 1/2)

EC-2, 28 NOV 2024 to 26 DEC 2024

EC-2, 28 NOV 2024 to 26 DEC 2024