

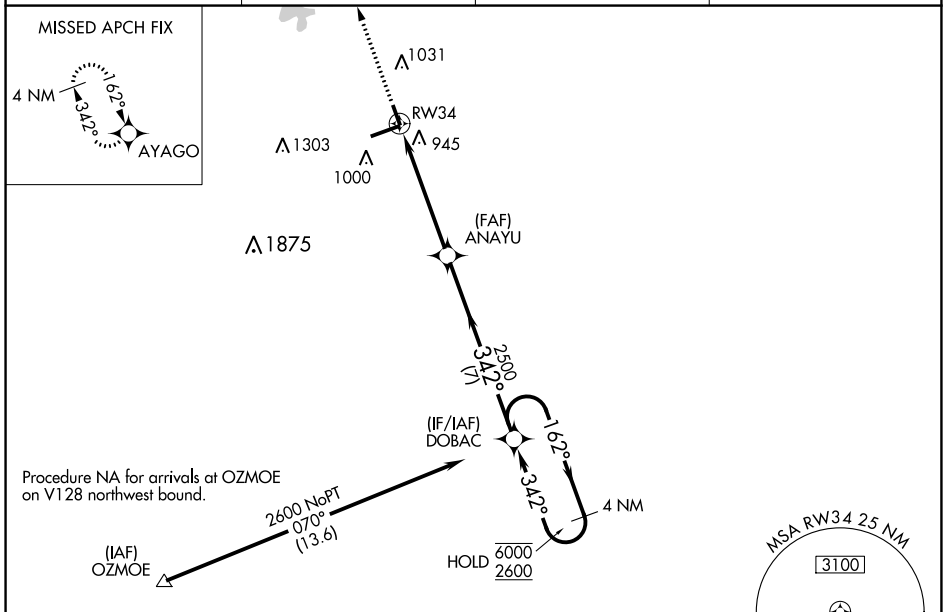
WAAS CH 45634 W34A	APP CRS 342°	Rwy Idg TDZE Apt Elev	3902 858 862
--	------------------------	-----------------------------	---

RNAV (GPS) RWY 34

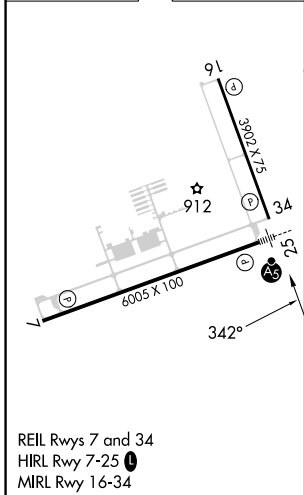
INDIANAPOLIS RGNL (MQJ)

RNP APCH.	MISSED APPROACH: Climb to 2500 direct AYAGO and hold.
⚠ NA For uncompensated Baro-VNAV systems, LNAV/VNAV NA below -16°C (4°F) or above 54°C (130°F).	

AWOS-3PT 124.175	INDIANAPOLIS APP CON 127.15 317.8	CLNC DEL 119.25	UNICOM 122.975 (CTAF) 📻
----------------------------	---	---------------------------	--



ELEV 862	TDZE 858
----------	----------



2500	AYAGO	VGSI and RNAV glidepath not coincident (VGSI Angle 3.00/TCH 49).	4 NM Holding Pattern	
↑	✦	ANAYU	DOBAC	
* LNAV only.	* 1.3 NM to RW34	2500	162° → 6000 ← 342° 2600	
	RW34	2500	GP 3.00° TCH 33	
	1.3 NM	3.8 NM	7 NM	
CATEGORY	A	B	C	D
LPV DA	DA	1058- ³ / ₄	200 (200- ³ / ₄)	
LNAV/VNAV DA	DA	1119- ⁷ / ₈	261 (300- ⁷ / ₈)	
LNAV MDA	1320-1	462 (500-1)	1320-1 ³ / ₈	462 (500-1 ³ / ₈)
📻 CIRCLING	1340-1	478 (500-1)	1360-1 ¹ / ₂ 498 (500-1 ¹ / ₂)	1660-2 ¹ / ₂ 798 (800-2 ¹ / ₂)

EC-2, 28 NOV 2024 to 26 DEC 2024

EC-2, 28 NOV 2024 to 26 DEC 2024