


(ROCKY1.ROCKY) 23334

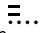
# ROCKY ONE DEPARTURE

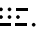
AL-6452 (FAA)

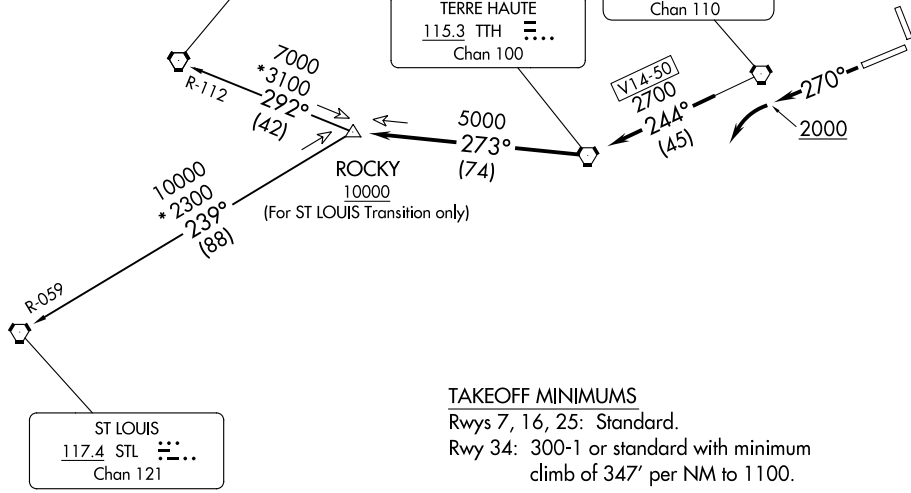
INDIANAPOLIS RGNL (MQJ)  
INDIANAPOLIS, INDIANA

AWOS-3PT  
124.175  
CLNC DEL  
119.25  
INDIANAPOLIS DEP CON  
127.15 317.8

SPINNER  
112.7 SPI   
Chan 74

TERRE HAUTE  
115.3 TTH   
Chan 100

BRICKYARD  
116.3 VHP   
Chan 110



### TAKEOFF MINIMUMS

Rwys 7, 16, 25: Standard.

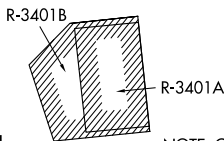
Rwy 34: 300-1 or standard with minimum climb of 347' per NM to 1100.

NOTE: RADAR required.

NOTE: Select appropriate localizer/DME frequency/channel prior to departure.

NOTE: Turbojets accelerate to 250K until reaching 10000, if unable advise ATC.

NOTE: Assigned to aircraft with a requested altitude of 11000 or above.



### DEPARTURE ROUTE DESCRIPTION

**TAKEOFF RWY 25:** Climb heading 270° to 2000 before turning left. Then on assigned heading to assigned altitude. Thence . . . .

**DEPARTING ALL OTHER AUTHORIZED RUNWAYS:** Climb on assigned heading to assigned altitude. Thence . . . .

. . . . expect RADAR vectors to join VHP R-244 to TTH VORTAC, then via TTH R-273 to ROCKY INT then via transition or assigned route. Expect clearance to requested altitude ten minutes after departure.

**SPINNER TRANSITION (ROCKY1.SPI):** From over ROCKY INT on SPI R-112 to SPI VORTAC.

**ST LOUIS TRANSITION (ROCKY1.STL):** From over ROCKY INT on STL R-059 to STL VORTAC.

# ROCKY ONE DEPARTURE

(ROCKY1.ROCKY) 01FEB18

INDIANAPOLIS, INDIANA  
INDIANAPOLIS RGNL (MQJ)

EC-2, 28 NOV 2024 to 26 DEC 2024

EC-2, 28 NOV 2024 to 26 DEC 2024