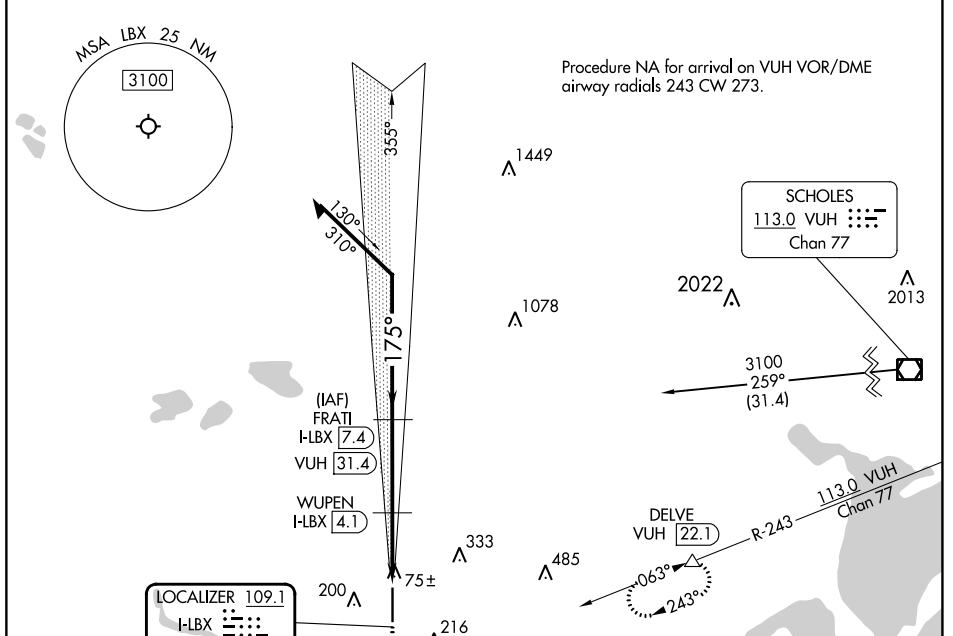


LOC/DME I-LBX <b>109.1</b> Chan <b>28</b>	APP CRS <b>175°</b>	Rwy Idg <b>7000</b> TDZE <b>25</b> Apt Elev <b>25</b>
---	------------------------	---

# ILS or LOC RWY 17

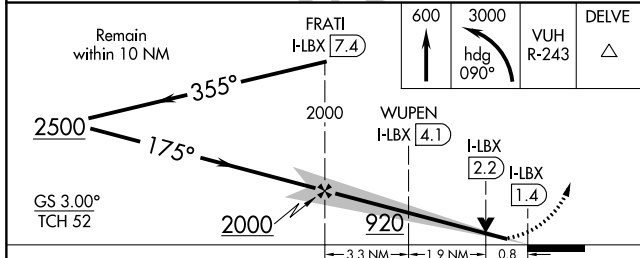
TEXAS GULF COAST RGNL (L.B.X)

DME required.		MALSRL	MISSED APPROACH: Climb to 600 then climbing left turn to 3000 on heading 090° and VUH VOR/DME R-243 to DELVE/VUH 22.1 DME and hold, continue climb-in-hold to 3000.
For inop ALS, increase S-LOC 17 Cat C/D visibility to ½ SM. Circling NA east of Rwy 17-35.			
ASOS <b>119.925</b>	HOUSTON APP CON <b>134.45 284.0</b>	CLNC DEL <b>125.2</b>	UNICOM <b>123.0 (CTAF) 0</b>

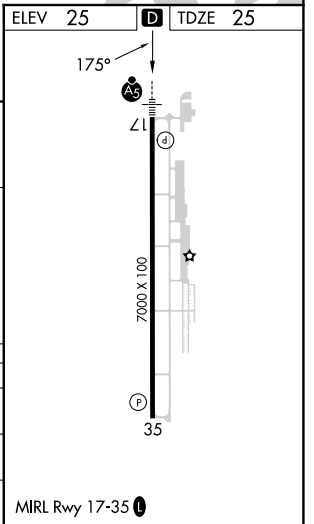


ELEV 25	D	TDZE 25
---------	---	---------

175°  
41  
100 X 100  
7000 X 6000  
35



CATEGORY	A	B	C	D
S-ILS 17		225-½	200 (200-½)	
S-LOC 17		340-½	315 (400-½)	
CIRCLING	500-1	475 (500-1)	500-1½ 475 (500-1½)	620-2 595 (600-2)



SC-5, 28 NOV 2024 to 26 DEC 2024

SC-5, 28 NOV 2024 to 26 DEC 2024