

(INDIE8.INDIE) 21280

AL-6453 (FAA)

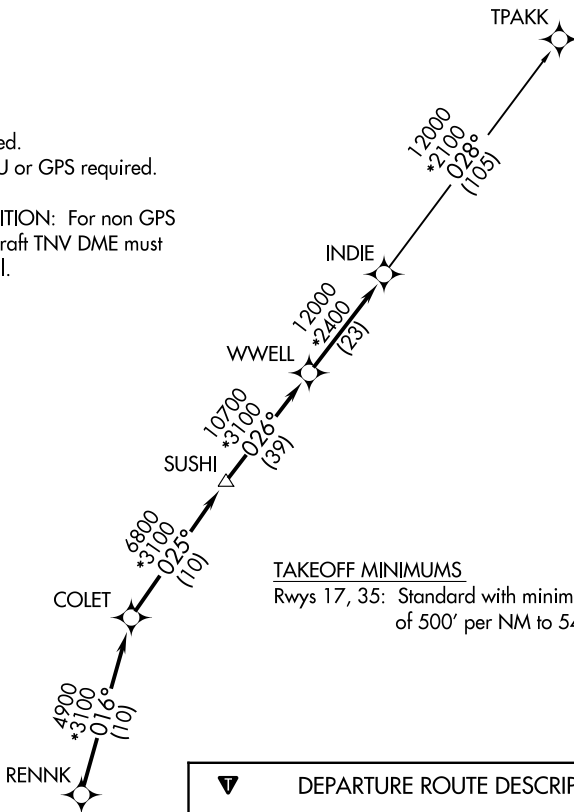
TEXAS GULF COAST RGNL (L.BX)  
ANGLETON/LAKE JACKSON, TEXAS

# INDIE EIGHT DEPARTURE (RNAV)

**TOP ALTITUDE:  
ASSIGNED BY ATC**

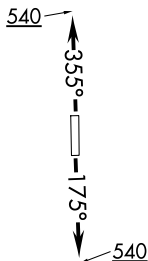
ASOS  
119.925  
CLNC DEL  
125.2  
CTAF  
123.0  
HOUSTON DEP CON  
134.45 284.0

NOTE: RADAR required.  
NOTE: DME/DME/IRU or GPS required.  
NOTE: RNAV 1.  
NOTE: TPAKK TRANSITION: For non GPS  
equipped aircraft TNV DME must  
be operational.



### TAKEOFF MINIMUMS

Rwys 17, 35: Standard with minimum climb  
of 500' per NM to 540.



### DEPARTURE ROUTE DESCRIPTION

TAKEOFF RUNWAY 17: Climb on heading 175°  
to 540 for RADAR vectors to RENNK, thence . . .

TAKEOFF RUNWAY 35: Climb on heading 355°  
to 540 for RADAR vectors to RENNK, thence . . .

. . . on track 016° to COLET, then on track 025°  
to SUSHI, then on track 026° to WWELL, then on  
track 026° to INDIE, then on (transition).

Maintain ATC assigned altitude. Expect filed  
altitude 10 minutes after departure.

TPAKK TRANSITION (INDIE8.TPAKK)

NOTE: Chart not to scale.

# INDIE EIGHT DEPARTURE (RNAV)

(INDIE8.INDIE) 07OCT21

ANGLETON/LAKE JACKSON, TEXAS  
TEXAS GULF COAST RGNL (L.BX)

SC-5, 28 NOV 2024 to 26 DEC 2024

SC-5, 28 NOV 2024 to 26 DEC 2024