

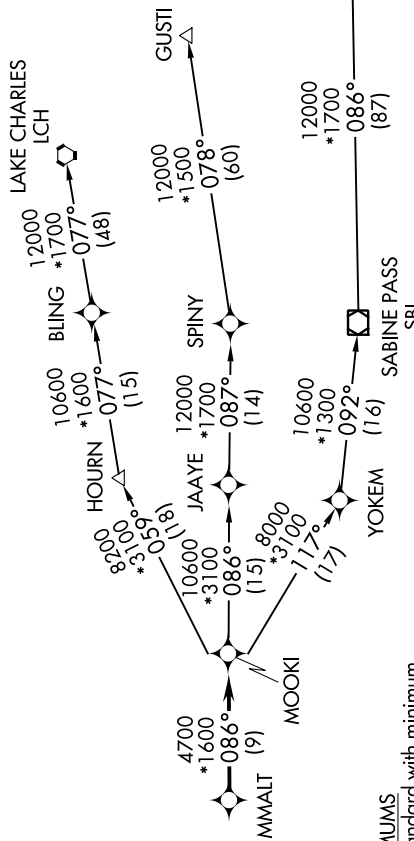
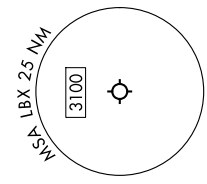
# MMALT SEVEN DEPARTURE (RNAV)

ANGLETON/LAKE JACKSON, TEXAS

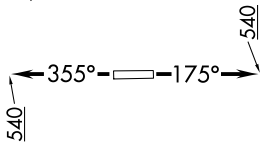
SC-5, 28 NOV 2024 to 26 DEC 2024

RNAV 1 - DME/DME/IRU or GPS.  
RADAR required.

HOUSTON DEP CON  
134.45 284.0  
ASOS  
119.925  
CLNIC DEL  
125.2  
CTAF  
123.0



**TAKEOFF MINIMUMS**  
Rwys 17, 35: Standard with minimum  
climb of 500' /NM to 540.



**TOP ALTITUDE:  
ASSIGNED BY ATC**

**NOTE:** GUSTI and LCH Transitions ATC assigned only for aircraft departing  
AXH, EFD, GLS, HPY, IWS, LBX, LVJ, SGR, TME, T00, T41 and 54T.

### DEPARTURE ROUTE DESCRIPTION

**TAKEOFF RUNWAY 17:** Climb on heading 175° to 540, for RADAR vectors to MMALT, thence. . . .  
**TAKEOFF RUNWAY 35:** Climb on heading 355° to 540, for RADAR vectors to MMALT, thence. . . .  
... on track 086° to MOOKI, then on (transition). Maintain ATC assigned altitude.  
Expect filed altitude 10 minutes after departure.

- GUSTI TRANSITION (MMALT7.GUSTI)
- LAKE CHARLES TRANSITION (MMALT7.LCH)
- WHITE LAKE TRANSITION (MMALT7.LLA)

NOTE: Chart not to scale.

# MMALT SEVEN DEPARTURE (RNAV)

(MMALT7.MMALT) 30NOV23

ANGLETON/LAKE JACKSON, TEXAS  
TEXAS GULF COAST RGNL (LBX)

SC-5, 28 NOV 2024 to 26 DEC 2024