

MILFORD, IOWA

AL-6455 (FAA)

23278

VOR/DME SPW 115.15 Chan 98 (Y)	APP CRS 005°	Rwy Idg TDZE Apt Elev N/A N/A 1439
--	------------------------	--

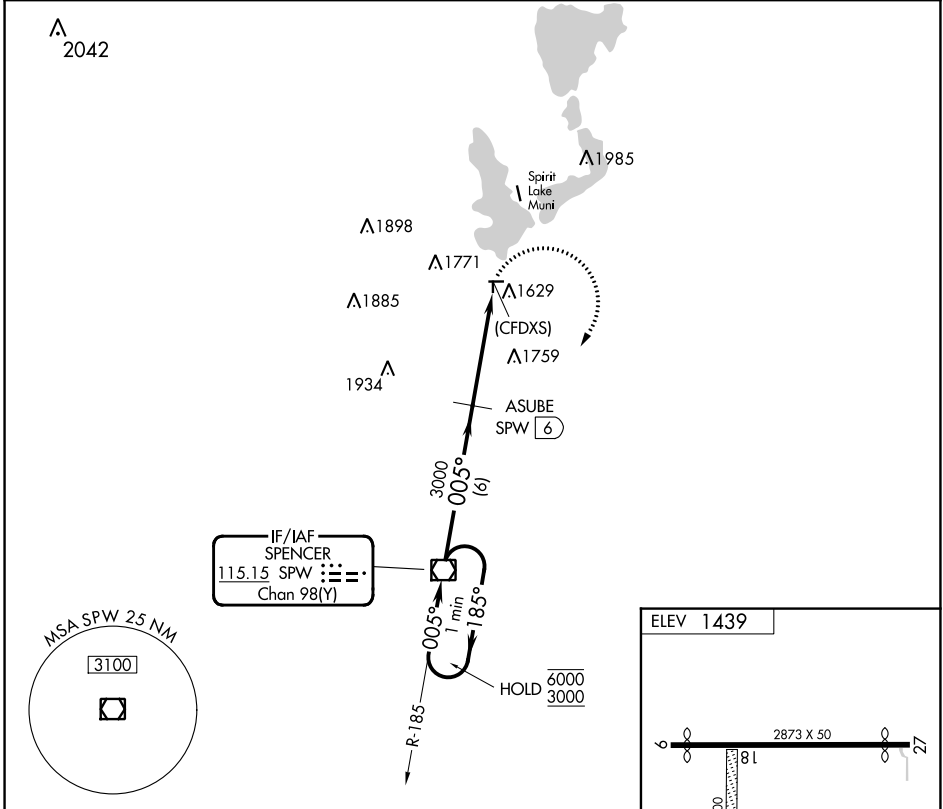
VOR-A
FULLER(4D8)

DME required. RADAR required for procedure entry.

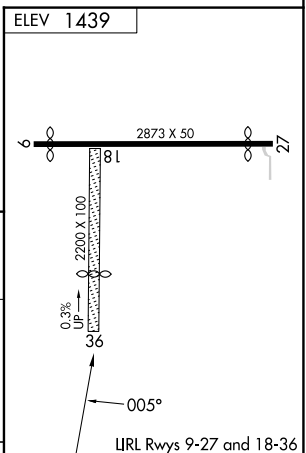
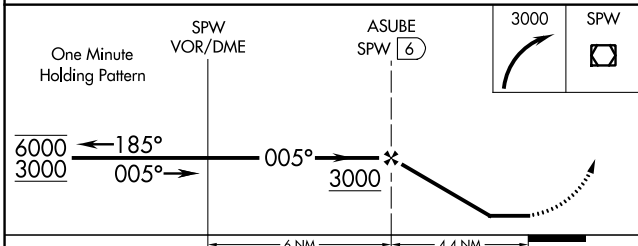
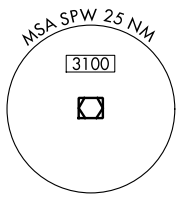
NA Circling NA to Rwy 18 and 36. Procedure NA at night. Use Spencer altimeter setting, when not received, use Estherville altimeter setting and increase all MDA 40 feet.

MISSED APPROACH: Climbing right turn to 3000 direct SPW VOR/DME and hold.

SPW ASOS 126.625	MINNEAPOLIS CENTER 127.75 257.7	CTAF 122.9
----------------------------	---	----------------------



IF/IAF
SPENCER
115.15 SPW
Chan 98(Y)



CATEGORY	A	B	C	D	FAF to MAP 4.4 NM					
C CIRCLING	2100-1 661 (700-1)		NA		Knots	60	90	120	150	180
					Min:Sec	4:24	2:56	2:12	1:46	1:28

MILFORD, IOWA
Amdt 1 03JAN19

43°20'N-95°10'W

FULLER(4D8)
VOR-A

NC-3, 28 NOV 2024 to 26 DEC 2024

NC-3, 28 NOV 2024 to 26 DEC 2024