

| | | |
|--|------------------------|---|
| WAAS CH 93621 W32A | APP CRS 322° | Rwy Idg 4313 TDZE 43 Apt Elev 44 |
|--|------------------------|---|

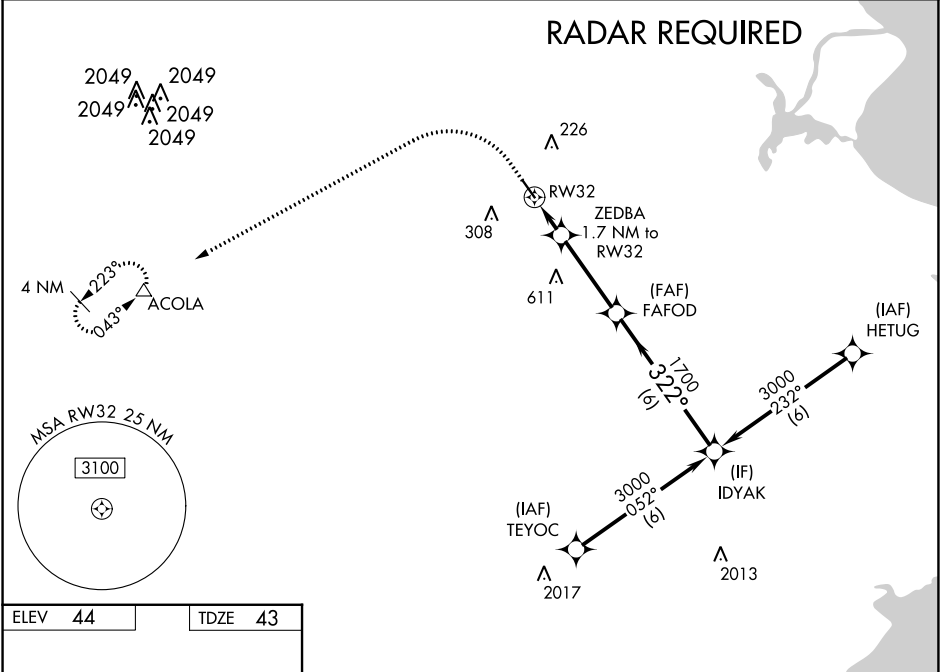
RNAV (GPS) RWY 32

PEARLAND RGNL (L V J)

⚠ Circling to Rwy 14 NA at night. For uncompensated Baro-VNAV systems, LNAV/VNAV NA below -1°C (31°F) or above 54°C (130°F). When local altimeter setting not received, use William P Hobby altimeter setting and increase all DA 18 feet and all MDA 20 feet, increase LNAV/VNAV visibilities all Cats 1/8 mile. VDP and Baro-VNAV NA when using William P Hobby altimeter setting. DME/DME RNP-0.3 NA. Helicopter visibility reduction below 3/4 SM NA.

MISSED APPROACH: Climb to 500 then climbing left turn to 3000 direct ACOLA and hold.

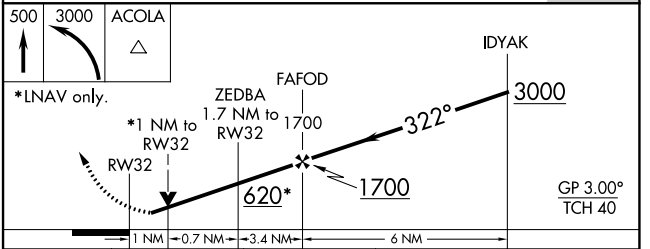
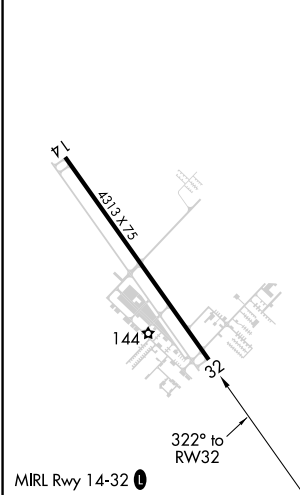
| | | | |
|------------------------|--|--------------------------|-----------------------------------|
| ASOS 118.525 | HOUSTON APP CON 134.45 284.0 | CLNC DEL 124.0 | UNICOM 122.725 (CTAF) 0 |
|------------------------|--|--------------------------|-----------------------------------|



SC-5, 28 NOV 2024 to 26 DEC 2024

SC-5, 28 NOV 2024 to 26 DEC 2024

| | |
|----------------|----------------|
| ELEV 44 | TDZE 43 |
|----------------|----------------|



| CATEGORY | A | B | C | D |
|-------------------|----------------------|----------------------|---|----|
| LPV DA | 293-7/8 | 250 (300-7/8) | | NA |
| LNAV/VNAV DA | 310-7/8 | 267 (300-7/8) | | NA |
| LNAV MDA | 400-1 | 357 (400-1) | | NA |
| C CIRCLING | 500-1 456 (500-1) | 660-1 616 (700-1) | | NA |