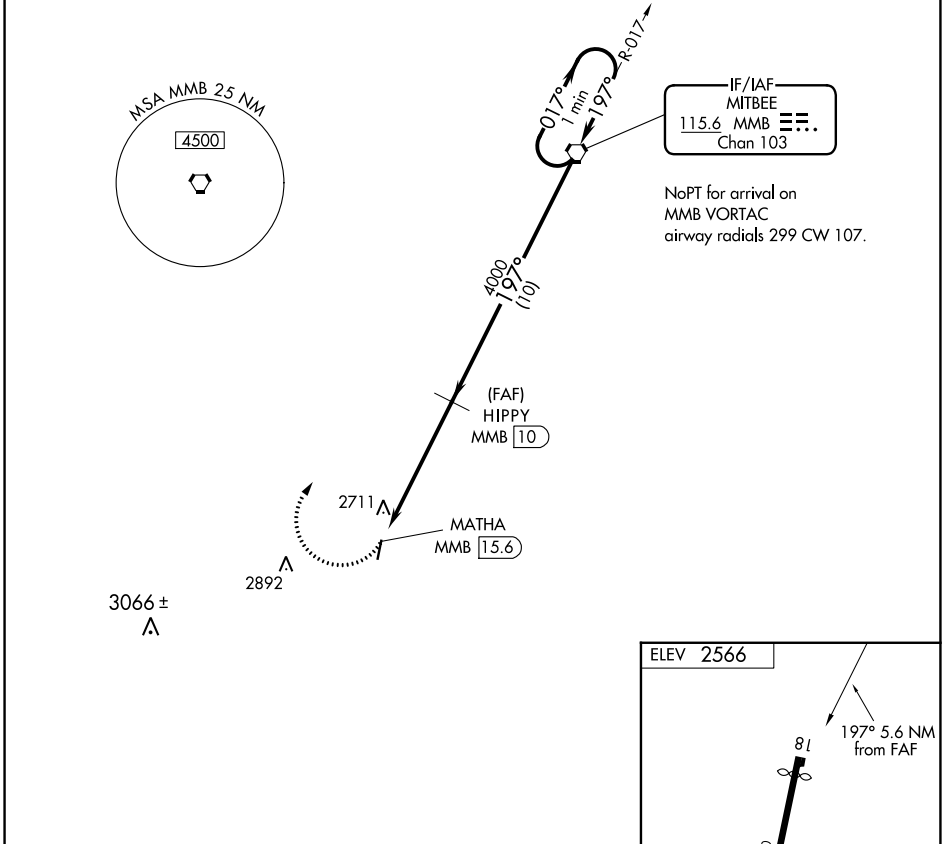


VORTAC MMB <b>115.6</b> Chan <b>103</b>	APP CRS <b>197°</b>	Rwy Idg TDZE Apt Elev	<b>N/A</b> <b>N/A</b> <b>2566</b>
---	------------------------	-----------------------------	---

**VOR/DME-A**  
HIGGINS/LIPSCOMB COUNTY (1X1)

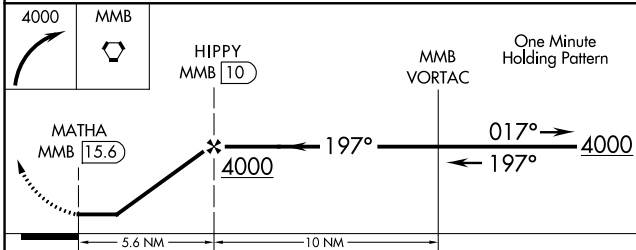
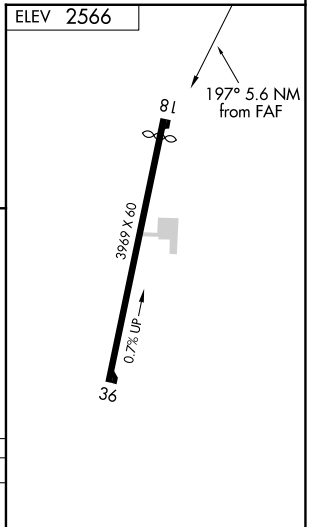
<p>Procedure NA at night. Use Canadian altimeter setting; when not received, use Gage, OK altimeter setting and increase all MDA 20 feet.</p> <p>NA</p>	<p>MISSED APPROACH: Climbing right turn to 4000 direct MMB VORTAC and hold.</p>
---	---

<p>KANSAS CITY CENTER <b>126.95 379.2</b></p>	<p>CTAF <b>122.9 0</b></p>
---	--------------------------------



IF/IAF  
MITBEE  
**115.6** MMB Chan 103

NoPt for arrival on MMB VORTAC  
airway radials 299 CW 107.



CATEGORY	A	B	C	D
CIRCLING	3140-1	574 (600-1)	3140-1½ 574 (600-1½)	NA