

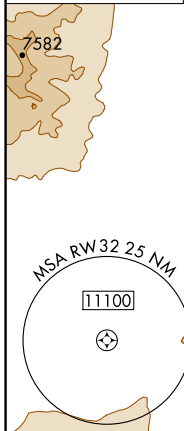
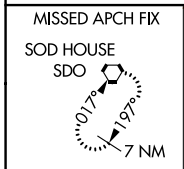
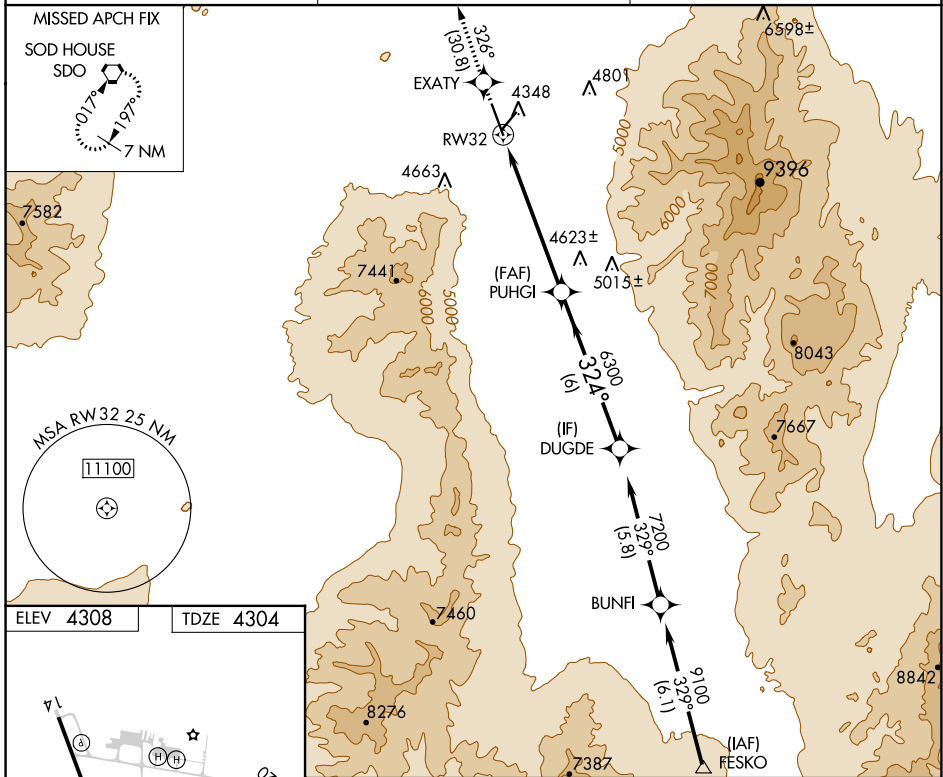
WAAS CH 72702 W32A	APP CRS 324°	Rwy Idg TDZE Apt Elev	7000 4304 4308
--	------------------------	-----------------------------	---

RNAV (GPS) RWY 32

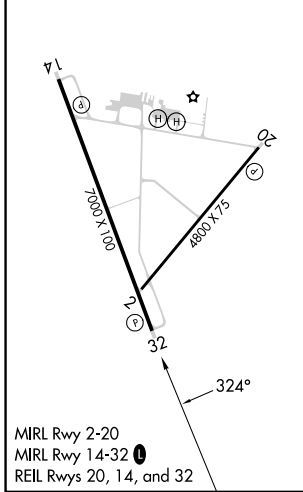
WINNEMUCCA MUNI (WMC)

RNP APCH. ⚠ Rwy 32 helicopter visibility reduction below 3/4 SM NA. VDP NA when using Battle Mountain altimeter setting. When local altimeter setting not received, use Battle Mountain altimeter setting and increase all DAs/MDAs 140 feet.	MISSED APPROACH: Climb to 10000 direct EXATY and on track 326° to SDO VORTAC and hold.
--	--

ASOS 120.175	SALT LAKE CITY CENTER 132.25 338.35	UNICOM 122.8 (CTAF) 0
------------------------	---	---------------------------------



ELEV 4308	TDZE 4304
-----------	-----------



MIRL Rwy 2-20
MIRL Rwy 14-32
REIL Rwy 20, 14, and 32

10000	EXATY	tr 326°	SDO	VGSI And RNAV glidepath not coincident (VGSI Angle 3.00/TCH 40).
*LNAV only				DUGDE 7200
*1.7 NM to RW32				GP 3.00° TCH 45
1.7 NM 4.3 NM 6 NM				
CATEGORY	A	B	C	D
LPV DA	4554-3/4		250 (300-3/4)	
LNAV MDA	4880-1	576 (600-1)	4880-1 1/2 576 (600-1 1/2)	4880-1 3/4 576 (600-1 3/4)

SW-4, 28 NOV 2024 to 26 DEC 2024

SW-4, 28 NOV 2024 to 26 DEC 2024