

# RNAV (GPS) RWY 10

SAGINAW COUNTY/H W BROWNE (HYX)

WAAS CH <b>50200</b> <b>W10A</b>	APP CRS <b>097°</b>	Rwy Idg <b>5002</b>
		TDZE <b>600</b>
		Apt Elev <b>602</b>

RNP APCH - GPS.

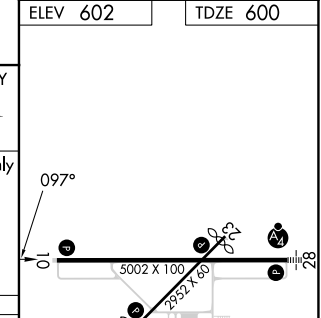
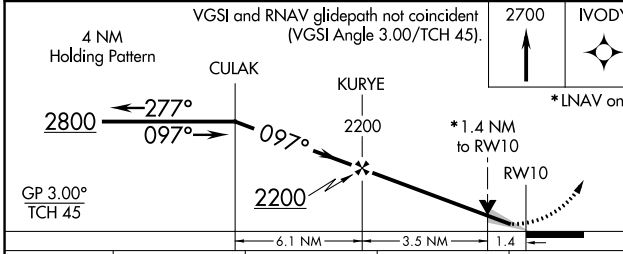
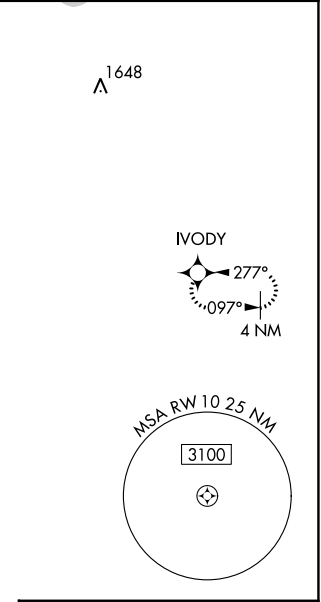
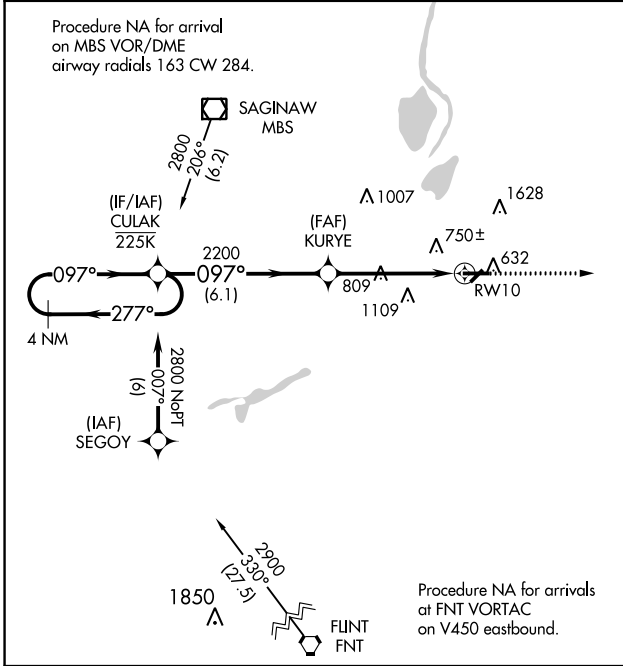
**T** For uncompensated Baro-VNAV systems, LNAV/VNAV NA below -18°C or above 54°C. Circling NA for Cat C north of Rwy 10-28.  
**A** Circling Rwy 5, 23 NA at night.

MISSED APPROACH: Climb to 2700 direct IVODY and hold.

AWOS-3PT  
**118.325**

GREAT LAKES APP CON ★  
**120.95 235.625**

UNICOM  
**122.8 (CTAF) 0**



CATEGORY	A	B	C	D
LPV DA	800-3/4	200 (200-3/4)		NA
LNAV/VNAV DA	1018-13/8	418 (500-13/8)		NA
LNAV MDA	1060-1	460 (500-1)	1060-13/8 460 (500-13/8)	NA
<b>C</b> CIRCLING	1100-1	498 (500-1)	1460-21/2 858 (900-21/2)	NA

REIL Rwy 10 0  
 HIRL Rwy 10-28 0  
 MIRL Rwy 5-23 0

# RNAV (GPS) RWY 10

EC-1, 28 NOV 2024 to 26 DEC 2024

EC-1, 28 NOV 2024 to 26 DEC 2024