

VOR/DME MBS <b>114.35</b> Chan <b>90Y</b>	APP CRS <b>125°</b>	Rwy Idg TDZE Apt Elev <b>602</b>	<b>N/A</b> <b>N/A</b> <b>602</b>
---	------------------------	---	--

# VOR/DME-A

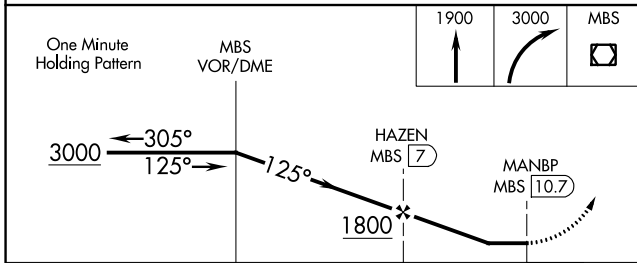
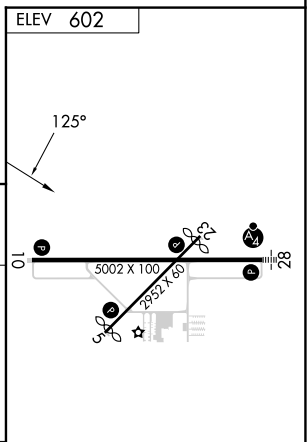
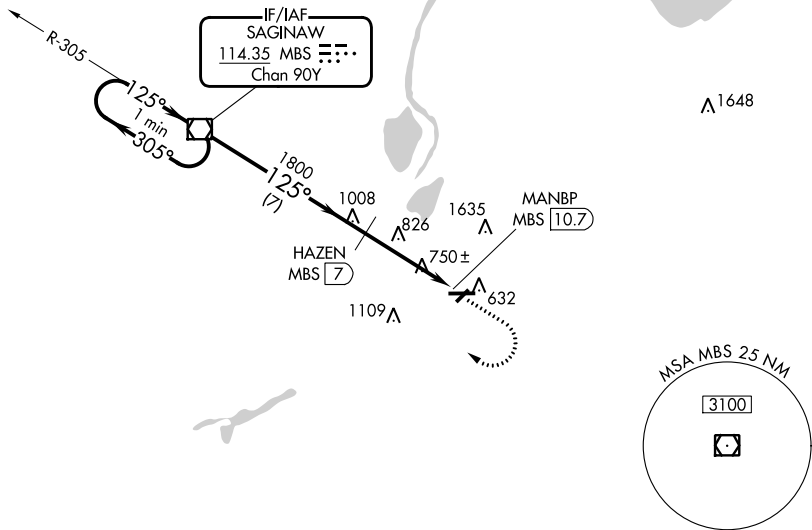
SAGINAW COUNTY/H W BROWNE (HYX)

**⚠** Circling to Rwy 5/23 NA at night. When local altimeter setting not received, use Saginaw MBS Intl altimeter setting and increase all MDA 40 feet and increase Circling Cat C visibility ¼ SM. Circling NA for Cat C north of Rwy 10-28.

**⚠** MISSED APPROACH: Climb to 1900 then climbing right turn to 3000 direct MBS VOR/DME and hold.

AWOS-3PT <b>118,325</b>	GREAT LAKES APP CON ★ <b>120,95 235,625</b>	UNICOM <b>122.8 (CTAF) 0</b>
----------------------------	--	---------------------------------

NoPT for arrival on MBS VOR/DME  
airway radials 212 CW 016.



CATEGORY	A	B	C	D	REIL Rwy 10 0 HIRL Rwy 10-28 0 MIRL Rwy 5-23 0
<b>C</b> CIRCLING	1160-1	558 (600-1)	1460-2½ 858 (900-2½)	NA	

# VOR/DME-A

EC-1, 28 NOV 2024 to 26 DEC 2024

EC-1, 28 NOV 2024 to 26 DEC 2024