

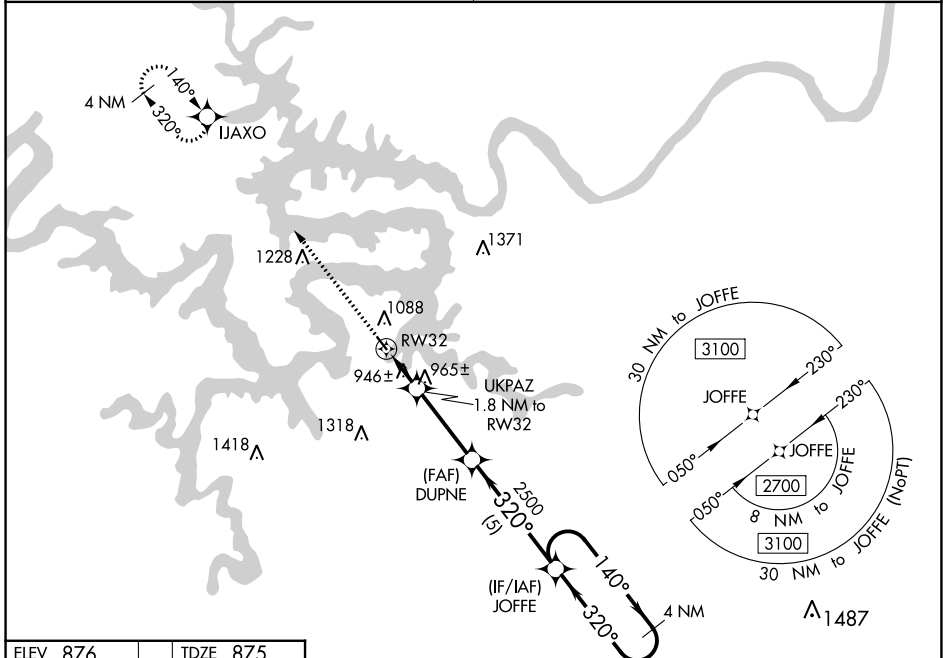
WAAS CH <b>86832</b> <b>W32A</b>	APP CRS <b>320°</b>	Rwy Idg <b>3205</b> TDZE <b>875</b> Apt Elev <b>876</b>
--	------------------------	---

# RNAV (GPS) RWY 32

GRAND GLAIZE-OSAGE BEACH (K15)

<p><b>NA</b> DME/DME RNP-0.3 NA. Use Kaiser Lake Ozark altimeter setting; when not received, use Camdenon altimeter setting and increase all MDA 40 feet. Procedure NA at night. Helicopter visibility reduction below 1 SM NA.</p>	<p>MISSED APPROACH: Climb to 2700 direct IJAXO and hold.</p>
---	--

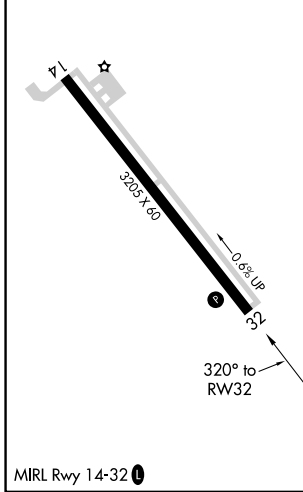
<p>MIZZU APP CON <b>124.1 353.925</b></p>	<p>UNICOM <b>122.8 (CTAF) 1</b></p>
---	---



NC-3, 28 NOV 2024 to 26 DEC 2024

NC-3, 28 NOV 2024 to 26 DEC 2024

ELEV 876	TDZE 875
----------	----------



2700	IJAXO	Visual Segment - Obstacles.	JOFFE	4 NM Holding Pattern
↑	✧	UKPAZ 1.8 NM to RW32	DUPNE	→ 140° → 2700
		RW32	← 320° ← 2700	
		1460	2500	
		1.8 NM	3.2 NM	5 NM
CATEGORY	A	B	C	D
LP MDA	1220-1	345 (400-1)		NA
LNAV MDA	1240-1	365 (400-1)		NA
CIRCLING	1420-1	544 (600-1)		NA